

*First Session, Lots 1 – 292**Tuesday 21st April at 11 am*

## Listed By Subject: Cinderellas

- |      |  |                  |
|------|--|------------------|
| 1    | An accumulation, incl. Denmark, France, Germany, Great Britain, also some revenues, fakes and forgeries, also a large accumulation of Christmas labels of the world, etc. (many 1,000s)  | <b>£600-£700</b> |
| 2    | An all World accumulation in three stockbooks, leaves and loose, incl. Australia, Germany, Great Britain, charity stamps, cheese labels, blocks and sheets, duplication, etc. (1,000s)   | <b>£350-£400</b> |
| 3    | A selection on covers and cards, incl. Austria, France, Great Britain, etc. (475 items)  | <b>£250-£300</b> |
| 4    | An accumulation in albums, stockbooks and loose, incl. Esperanto, Great Britain with patriotic labels, etc. (1,000s)   | <b>£150-£200</b> |
| 5    | An all World accumulation in sixteen stockbooks, two albums, leaves and loose, incl. locals, charity labels, bogus, exhibitions, etc. (1,000s)   | <b>£100-£150</b> |
| 6    | <b>Airmail Etiquettes:</b> An all World accumulation, incl. multiples, good range of types, etc. (many 100s)   | <b>£100-£150</b> |
| 7    | <b>Anti-T.B. Labels:</b> An all World accumulation in two albums (one empty), two stockbooks and loose, incl. Belgium, Denmark, France, Korea, Mexico, U.S.A., booklets, many complete sheets, also a range of Christmas seals, etc. (many 1,000s) | <b>£150-£200</b> |
| 8    | <b>Christmas Labels:</b> A large accumulation in an album, stockbook and loose, incl. Denmark, Norway, Sweden, U.S.A., booklets and sheets, Anti-T.B. labels, etc. (1,000s)  | <b>£100-£150</b> |
| 9    | <b>Kinderpost:</b> An accumulation on leaves and loose, incl. a good range of miniature stamps, postal stationery, multiples, covers, etc. (many 100s)   | <b>£100-£150</b> |
| 10   | <b>Officially Sealed Labels:</b> An accumulation in a stockbook, incl. Great Britain, Japan, Southern America, etc. (100s)   | <b>£200-£250</b> |
| 11   | <b>Philatelic Christmas Cards:</b> An early to modern accumulation, produced by dealers, philatelic societies, post offices, etc. (few 100s)   | <b>£100-£150</b> |
| 12   | <b>Philatelic Souvenirs:</b> A collection from 1900 in four stockbooks, incl. souvenir sheets, advertising labels, Great Britain, U.S.A., duplication, etc. (many 100s)  | <b>£300-£350</b> |
| 13 ☒ | <b>QSL Cards:</b> An all World selection in a cover album, incl. Germany, Netherlands, South Africa, etc. (few 100s)   | <b>£100-£150</b> |
| 14   | <b>Railway Stamps:</b> A Europe selection, incl. Belgium, Denmark, Latvia, Netherlands, Switzerland, etc. (200)  | <b>£100-£120</b> |
| 15   | <b>Registration Labels:</b> An all World collection in four albums, incl. Australia, Great Britain, India, Southern Africa, bundleware and much duplication, etc. (1,000s)   | <b>£150-£200</b> |
| 16   | <b>Savings Stamps:</b> An all World collection, incl. France, Great Britain with National War Savings, P.O.S.B., P.O. Training School, Sweden, etc. (260)  | <b>£250-£300</b> |
| 17   | - An all World selection on leaves and stockleaves, incl. Australia, Canada, France, India, Netherlands, etc. (260)  | <b>£250-£300</b> |
| 18   | <b>'Toy' or 'Kinder' Stamps:</b> An all World accumulation in a folder, incl. Great Britain, Poland, Portugal, Sweden, etc. (many 100s)  | <b>£100-£120</b> |

# POSTAL ORDER SOCIETY

The society was formed in 1985 by a group of keen collectors to promote the nascent hobby and encourage the study of Postal Orders, Postal Notes, Post Office Money Orders and related ephemera. This came a year after two publications on Postal Orders, which included history, definitive listings and prices. Whilst the society is UK-based the membership is world-wide, including Europe, USA, Canada, New Zealand and Australia. The total membership is around 80.

Since they were first issued in 1881, Postal Orders have achieved a degree of notoriety. The well-known play *The Winslow Boy* has a plot which centres on the true story of a naval cadet who was dismissed for allegedly stealing a 5/- order, which is still extant in the Post Office archives.

In the school yarns, Billy Bunter was always expecting his Postal Order, which generally failed to materialise. In spite of the advent of far easier means of transmitting money, Postal Orders are as popular as ever and are still sold in millions. Internet sales and auctions are now boosting their use. Automated Postal Orders, recently introduced, have consigned the counterfoil and local hand-stamp to history, but different varieties are still there for the discerning collector.

Many of the facets of stamps can be found in Postal Orders. There are perfins, which have perforated date-stamps and were issued as football payments; overprints and surcharges; watermark varieties, including sideways and reversed; machine issued; errors; commemoratives; booklets and legal tender issues relating to the first weeks of both World Wars.

In the mid-1980s special customised or promotional Postal Orders appeared, the first being issued by Cinzano in return for a number of bottle caps. These

colourful innovations continued from the makers of coffee, car mats and others. In 2006 Postal Order cash-backs were issued by Knorr, Birds Eye, Ecover and the Post Office Insurance.

Ordinary Postal Orders used to donate to charity have the added facility of a claim for tax originally paid by the donor by means of a declaration on the reverse of the order.

Most collectors tend to specialise in British Postal Orders (BPOs), but more than a hundred issuers (countries and states) have sold British and/or their own internal orders. Around thirty still do, mainly ex British Colonies and Commonwealth. Some issues were called Postal Notes. Many overseas issued BPOs were overprinted. British Forces abroad carried their own stocks and they were issued at Field Post Offices. There were mobile post office hand-stamps for issues at big events, eg Wimbledon.

Members of the society receive a quarterly newsletter packed with information, views, details of current issues and much more.

Postal auctions are conducted on a regular basis and a members' list of items for sale is available, which is especially suitable for new members.

For further information go to <http://postalordersociety.blogspot.com> and <http://postalorders.informe.com>

The UK subscription is £5 pa.

The society is a member of the Association of British Philatelic Societies (ABPS) and the American Philatelic Society (APS)



## Locals

- 19 An all World accumulation, incl. Christmas Island, France, New Caledonia, New Hebrides, Venezuela, etc. (100s) **£200-£250**
- 20 A selection in two albums, incl. Denmark, Germany, Sweden, etc. (100s) **£150-£200**
- 21 A small accumulation, Australia, France and Colonies, Germany, Turkey, etc. (few 100s) **£120-£150**
- 22 **Carrier Stamps:** A selection with Australia, Canada and New Zealand, incl. Blue Spot, Trackfast, V/Line, T.N.T., Melbourne Tram, Speedline, etc. (150) **£100-£120**
- 23 **Scandinavia:** An accumulation on leaves and loose, incl. Denmark, Sweden, etc. (100s) **£150-£200**
- 24 ☒ - A selection of local postal stationery, comprising Denmark (14), Finland (5), Norway (27), Sweden (11), all unused, slight duplication. (57 items) **£100-£150**
- 25 **Steamship Companies:** A selection, incl. Central America Steamship Co., Royal Mail Steam Packet, St. Lucia, Venezuela, some reprints and forgeries, etc. (220) **£200-£250**

## Postal Orders

- 26 **Australia:** A selection of Money and Postal orders, incl. Victoria 1942 10s., 1955 2s. and 5s., New South Wales 1950 5s., etc. (12 items) **£100-£120**
- 27 **British Africa:** Great Britain overprinted for use in Gold Coast 5s. used 1946, East Africa 10s. used 1962, Gambia 10s. used 1962, scarce. **£120-£150**
- 28 - Selection from mainly 1980s onwards with East Africa, Kenya (15), Tanzania (33), Rhodesia (15), Uganda (15), varied condition. (87) **£80-£100**
- 29 **British Africa and Middle East:** Mainly 1990s selection with Ghana (16), Nigeria (9), Jordan (10), Israel (9), Sudan (18) also Thailand (28), with counterfoils, varied condition. (90) **£100-£120**
- 30 **British Asia:** A selection from 1970s onwards, mainly with counterfoils, India (56) Pakistan and Bangladesh (44), fair to fine. (100) **£100-£120**
- 31 **British Pacific and British Asia:** Selection of mainly 1990s items, most with counterfoils with British Solomon Islands (8), Brunei (12), Fiji (18), Malaysia (13), Mauritius (35), Papua New Guinea (13), Singapore (12), Sri Lanka (4), fair to fine. (115) **£100-£120**
- 32 **British West Indies:** Mainly 1990s selection with counterfoils, with British Guiana and Guyana (23), Jamaica (21 to \$200), Trinidad and Tobago (9), good to fine. (53) **£80-£100**
- 33 **Burma:** K.G.VI 20s. overprinted "PAYABLE IN BURMA/3½ annas", used in 1949 at Rangoon, with counterfoil. Photo on page 12. **£80-£100**
- 34 **Gibraltar:** Great Britain 1984 40p. and £2, 1987 25p., 30p. and 40p. each used in Gibraltar (5) **£100-£120**

### Great Britain

- 35 S Q.V. 1881 1st. issue 1s. to 20s. set of ten all overprinted "SPECIMEN", scarce. Photo on page 12. **£150-£200**
- 36 Q.V. 2nd. issue 1s. used 1882 fine, also 3rd issue 1s. used 1898 uprated by 1d. (3), slightly soiled. **£100-£120**
- 37 Q.V. 2nd. issue 1s. (2), dated "1889" and "1900" both with creases, otherwise fine. Photo on page 12. **£120-£150**
- 38 Q.V. 2nd. issue 1s.6d (2), 2s.6d. and 5s. used 1886-92, also 3rd. issue 4s. (with punch hole) used 1899, poor to good. **£200-£250**



Ex 35



33



Ex 37



39



43



59



60

**Postal Orders: Great Britain** continued

- 39 Q.V. 1900 20s. marked "*Cancelled*" in red manuscript, scarce and unusual, fair condition. *One of approx. 40 stolen whilst in transit to troops during the Boer War.* Photo. **£100-£120**
- 40 K.E.VII 3rd. issue 6d. (1912, fine), 1s. with counterfoil (1909), 6d., 1s. and 2s. poor. **£120-£150**
- 41 K.E.VII 3rd. issue 6d., 1s. and 2s.6d. used 1910, 1909, 1910 respectively, fair condition. **£100-£120**
- 42 K.E.VII Old Age Pension 5s. postal order dated "8 NOV 12" superb, also K.G.V. 10s. (2) one dated "26 OCT 34" and "31 MAY 35" (both have the same serial number), 10s. Widow's Pension dated "30 JAN 34", good to fine. **£120-£150**
- 43 K.G.V 1914 1s. Downey Head, issued without counterfoil as legal tender currency. Never issued, postmarked "ADMIRALTY/10 SEP.14", very rare. Photo also on inside front cover. **£200-£250**
- 44 K.G.V selection, comprising Downey Head 6/6 used 1914. 1935 Silver Jubilee 6d. with counterfoils, 10s. Widow's Pension (dated 1933) and 10s. Old Age Pension order (dated 1935). **£120-£150**
- 45 A K.G.V selection, comprising 6d. (6), 1s. (4), 1s.6d., 2s. (3), 2s.6d. (8), 3s. (2), 3s.6d., 4s. (2), 4s.6d., 5s. (3), 5s.6d. (2), 7s.6d. and 9s., also Silver Jubilee 2s.6d., mixed condition. **£150-£200**
- 46 K.G.V 1935 Silver Jubilee 6d. (3) and 1s., each with counterfoil and punch holes. **£100-£120**
- 47 K.G.VI selection, comprising 6d. (7), 1s. (9), 1s.6d. (5), 2s. (6), 2s.6d. (8), 3s. (4), 3s.6d. (6), 4s. (6), 4s.6d., 5s. (10), 6s. (3), 7s. (3), 7s.6d. (2), 8s. (3), 9s. (2), 10s. (5), 11s., 13s. (2), 15s., 19s., 20s. (16), also 1956-58 'pale' on Q.E.II watermarked paper 1s. (4), 2s.6d., 4s.6d. and 5s., varied condition. **£150-£200**
- 48 K.G.VI 'Machine' postal orders issued from 1951 (Oct. 15), 6d. brown (2), one dated "10 NO 52" in London, other "12 OC 53" in Birmingham, both with punch holes, scarce. **£100-£120**
- 49 Q.E.II Queen full face type, 38 with and without counterfoils, values to £20, (face value £274+), also 2003 50th. Anniversary £10 in presentation pack. (39 items) **£200-£250**
- 50 Q.E.II P.O. School Training issues, 48 different, incl. £10 cancelled 'Youth Training', 5s., £1 and £5 P.O. dummy items, £5 (3) Post Marketing all cancelled, Fife Council (8), etc. (63 items) **£120-£150**
- 51 Q.E.II selection to 1970, comprising 6d. (5), 1s. (20), 1s.9d. (9), 2s. (12), 2s.6d. (16), 3s. (6), 3s.6d. (11), 4s. (3), 4s.6d. (4), 5s. (26), 6s. (9), 7s. (10), 8s., 9s., 10s. (11), 11s. (2), 12s. (3), 13s. (2), 14s., 15s. (5), 16s. (3), 17s., 18s., 19s. (3), £1 (5), 21s. (2), £2 (2), £3 and £5, some with counterfoils, mixed condition. **£150-£200**
- 52 Q.E.II 1970-71 dual currency selection, comprising 1s./5p. (2), 2s./10p. (3), 3s./15p. (3), 5s./25p., 7s./35p., £1, with poundage deleted by hand 1s./5p. (4), 5s./25p., without poundage 1s./5p., 15s./75p., mixed condition. **£120-£150**
- 53 Q.E.II 1971-84 P.O. School Training issues, comprising 34 different unused and used with values to £8. **£100-£120**
- 54 Q.E.II 1971 5p. (4), 7½p. (2), 10p., 12½p., 15p. (3), 20p. (6), 22½p. (2), 25p. (3), 30p. (6), 35p. (2), 40p. (3), 45p. (3), 50p. (3), 60p. (2), 70p. (2), 75p., 80p. (3), 90p. (2), £1 (3), with and without counterfoils. **£100-£120**
- 55 Q.E.II selection of promotional postal orders, incl. Argos, Maxwell House, Nescafe, Persil, also with some promotional material, etc. (25 items) **£80-£100**
- 56 Q.E.II full face, twenty-two with counterfoils, used in 1995, different types with values to £10, face value £111. **£80-£100**
- 57 **Great Britain used abroad:** A Q.E.II selection comprising 1978 50p., £1. used in F.P.O. 328, 1989 25p., 40p., 50p., and 30p. used in Seychelles, 1982 50p. used in Singapore, 1985 50p. used in Kuala Lumpur, 1993 £1 and £3 used in Hong Kong, (10 items) **£100-£120**
- 58 **Great Britain overprinted** for use in Barbados 6d. dated 1961, Bahamas 50p. dated 1985, Malta 1s. dated 1969, 25p. dated 1981. **£100-£120**

**Postal Orders** continued

- 59 **India:** K.G.VI 5r. used Mar. 1945 at F.P.O. no. 187, with counterfoil, fine. Photo on page 12. £80-£100
- 60 - 1946 Great Britain 1s.6d. overprinted "PAYABLE IN INDIA", cancelled in Calcutta. Photo on page 12. £100-£120
- 61 **Ireland:** A selection, incl. pre 1971 Harp Poundage 6d. (2), 2s., 10s. (3), 11s., post 1971 0.15 (2), 0.20 (3), 0.30, 0.45 (2), 0.55, 0.60, 0.75, range of later issues, etc. (42) £100-£120
- 62 **New Zealand:** A selection, comprising 1951 G.B. 1s. used, 1940s Postal Notes 2s. and 3s.6d., \$1.40, 1980 10c. (2), 1982 onwards with 10c., 50c. (2), \$1 (4), \$2, \$3 (2), \$4 (2), \$5 (2), most with counterfoils, also \$100 Savings Certificate. £150-£200
- 63 - Q.E.II Great Britain overprinted 50c. on 5s., 54c. on 5s (6), 25p., 75p. and £2 (2), one handstamped "CANCELLED". £100-£120
- 64 **Orange Free State:** 1898-99 selection comprising 1s. (2), 1s.6d. (2), 2s.6d. (2), 5s., 7s.6d., 10s. (4) and £1 (3), generally fine. (15) £250-£300
- 65 **Palestine:** 1947-48 50m., 500m., 550m., 750m. and £1, unusual. £100-£120
- 66 **South Africa:** Great Britain 6d. used 1923, Great Britain overprinted 1s. used 1949 and 1955, 5c. on 6d. used 1962 and 9c. on 1s. used 1970. £150-£200
- 67 **Southern Africa:** A selection of mainly 1990s items with counterfoils, comprising South Africa (52), South West Africa and Namibia (44), Bophuthatswana (28), Ciskei (31), Transkei (18), Venda (13), good to fine. (186) £100-£120
- 68 - A selection of mainly 1990s items with counterfoils with Botswana (24), Lesotho (35), Malawi (13), Swaziland (17), Zambia (19), good to fine. (108) £100-£120
- 69 **Transvaal:** 1898 (ca.) 20s. fine and complete, also 10s. attached to remainder of postal order book unused. £100-£150

**Poster Stamps**

- 70 An all World selection in three stockbooks, leaves and loose, incl. advertising, aviation, exhibitions, Germany, Great Britain, U.S.A., etc. (approx. 3,350) £500-£600
- 71 A mainly Europe selection in two stockbooks, incl. Belgium, Spain, exhibitions, events, etc. (1,300) £400-£500
- 72 An accumulation in five albums and on leaves, incl. Great Britain, Italy, W.W.I, 'Crossing the Channel' issues, etc. (many 100s) £400-£500
- 73 An all World accumulation in three stockbooks, incl. advertising, aviation, exhibitions, France, Germany, Great Britain, Italy, U.S.A., duplication, etc. (approx. 6,800) £400-£500
- 74 A collection in a stockbook, incl. stamp dealers, exhibition and club labels, etc. (100s) £250-£300
- 75 A selection in a stockbook and loose, incl. Germany, Great Britain with National Savings, Lord Roberts Memorial Fund albums (2), U.S.A., etc. (750) £150-£200
- 76 An accumulation in three stockbooks, packets and loose, incl. topographical, tourism, much duplication, etc. (1,000s) £150-£200
- 77 A collection in a stockbook and on leaves, incl. Germany with 1913 Kaiser's Jubilee issues in sheets of six, Great Britain with a range of patriotic labels, literature, etc. (100s) £150-£200
- 78 A mainly Europe selection in two stockbooks, incl. exhibitions, etc., most dated. (100s) £100-£120

- 79 A collection on leaves, mainly European, incl. France, Germany, Switzerland, the majority featuring events and exhibitions, etc. (1,200) **£100-£120**
- 80 An accumulation, incl. Belgium, France, Germany, U.S.A., many exhibitions, etc. (approx. 2,000) **£100-£150**
- 81 An all World accumulation, loose in packets, incl. Denmark, Germany, Netherlands, U.S.A., early to modern, etc. (approx. 4,000) **£100-£150**
- 82 **Cars and Bicycles:** An early to modern selection in a stockbook, incl. Germany, Italy, U.S.A., etc. (300) **£150-£200**
- 83 **Europe:** A collection in a stockbook, incl. early to modern, France, Germany, Great Britain, Italy, also 1900 Paris souvenir book, etc. (1,200) **£500-£600**
- 84 **Exhibitions:** An all World accumulation on stockleaves, incl. Belgium, France, Germany, Italy, heavy duplication, etc. (approx. 9,000) **£350-£400**
- 85 - An all World accumulation on stockleaves, incl. France, Germany, Italy, Switzerland, U.S.A., much duplication, etc. (approx. 6,000) **£350-£400**
- 86 - An accumulation from 1961 to 2000, incl. France, Germany, Spain, etc. (approx. 3,700) **£100-£130**
- 87 **Germany:** An accumulation in two stockbooks, with charity labels incl. religious and support for the blind, many different types, some duplication, etc. (approx. 2,900) **£250-£300**
- 88 - A collection in an album of German societies with a good range of types, incl. multiples, etc. (approx. 1,750) **£250-£300**
- 89 - A collection of German societies abroad in two albums and a stockbook, incl. good range of types, etc. (approx. 1,000) **£150-£200**
- 90 **Great Britain:** A collection in a stockbook, incl. 1864 Shakespeare red label (3), 1908 Franco-British Exhibition, 1924 Wembley, fairs, shows, some duplication, etc. (1,800) **£1,000-£1,200**
- 91 - A K.G.VI to Q.E.II selection in a stockbook and leaves, incl. exhibitions, political, patriotic, etc. (100s) **£100-£120**
- 92 - An accumulation of dated labels, in a stockbook, incl. commemorative, exhibitions, etc. (1,450) **£100-£150**
- 93 **Ireland:** A selection in a stockbook, incl. shows, fairs, Irish Hospital Sweepstakes, etc. (470) **£200-£250**
- 94 **Olympic Games:** An early to modern selection in a stockbook, incl. France, Greece, Netherlands, Sweden, etc. (500) **£120-£150**
- 95 **World War I:** An accumulation in five stockbooks and an empty Delandre printed album, incl. France with a good range of Delandre types and 1968 catalogue, Germany, Great Britain with Lord Roberts, Netherlands, Red Cross, etc. (approx. 3,900) **£800-£1,000**
- 96 - An accumulation of Delandre vignettes in a stockbook, good range, some duplication. (approx. 1,250) **£400-£500**
- 97 - Delandre special printed album, good range of vignettes from Belgium, Great Britain, the majority French, a few Colonies, Red Cross, etc. (approx. 1,000) **£300-£400**
- 98 - An accumulation in a stockbook, incl. Belgium, France, Great Britain, a few booklets, etc. (approx. 1,600) **£300-£400**
- 99 **World War II:** An accumulation in a stockbook, incl. France, Germany, Great Britain, etc. (500) **£100-£150**

## Revenues

- 100 A British Commonwealth selection in an album, leaves and stockleaves, incl. India, Malta, Mauritius, New Zealand, South Africa, much duplication, etc. (many 100s) **£600-£800**
- 101 A large accumulation in a stockbook, leaves and loose, incl. Argentine, Canada, Germany, Netherlands, Portugal, U.S.A., cinderellas, etc. (1,000s) **£400-£500**
- 102 An accumulation on leaves and loose, incl. Brunei, Bulgaria, Ceylon, Czechoslovakia, India with Azad Hind, duplication, etc. (100s) **£200-£250**
- 103 An all World collection on old French album leaves, incl. Argentina, Austria, Germany and States, etc. (100s) **£150-£200**
- 104 An all World accumulation, incl. China, Cuba, Greece, India, Italy, Iraq, Romania, Tunisia, etc. (many 100s) **£150-£200**
- 105 **Australasia:** A selection on stockleaves, incl. Australia and States with New South Wales, Queensland Impressed Duty Q.V. to £500 c.t.o., Victoria, Western Australia, also Fiji, New Zealand, etc. (549) **£500-£600**
- 106 **British Africa:** An accumulation incl. Gold Coast, Natal, Orange Free State, South Africa with Consular, South West Africa, Swaziland, Transvaal with Customs Frank Fee, much duplicated, etc. (1,000s) **£150-£200**
- 107 **British Commonwealth:** A selection, incl. Antigua, Grenada, Montserrat, Rhodesia, St. Vincent, Sarawak, Sierra Leone, some duplication, etc. (100s) **£250-£300**
- 108 - A selection, incl. Antigua, British Guiana, Cape of Good Hope, Malta, Nyasaland 1955 to £1 mint, Stellaland, etc. (few 100s) **£200-£250**
- 109 - An accumulation in a stockbook, incl. Hong Kong, Mauritius, New Zealand, Uganda, etc. (many 100s) **£200-£250**
- 110 **British Southern Africa:** A selection, incl. Cape of Good Hope, Kenya, Uganda and Tanganyika, Sierra Leone, Transvaal, etc. (668) **£500-£600**
- 111 **British West Indies:** A selection on stockleaves, incl. Antigua, Barbados, British Guiana, Dominica, Tobago, etc. (318) **£250-£300**
- 112 **Northern Europe:** A selection in two small stockbooks, leaves and loose, incl. Baltic States, Finland, Russia, duplication, etc. (100s) **£150-£200**
- 113 **Scandinavia:** An accumulation incl. Denmark cigarette strips (24), Norway, duplication, etc. (100s) **£100-£120**
- 114 **South America:** An accumulation incl. Argentina, Costa Rica, Chile, etc., much duplication. (100s) **£100-£150**
- 115 - An accumulation incl. Ecuador, Guatemala, Mexico, Nicaragua, Venezuela, etc. (100s) **£100-£150**

## Telegraphs

- 116 An accumulation in three stockbooks, incl. Argentina, Austria, Belgium, Brazil, Ceylon, Hungary, duplication, etc. (many 100s) **£250-£300**
- 117 An all World selection in two stockbooks, incl. Colombia, Cuba, Germany, Switzerland, some duplication, etc. (100s) **£200-£250**
- 118 **Telegram Forms:** An all World accumulation of unused and used forms, incl. Australia and States, Cyprus, Germany, India, Greetings, some stationery, etc. (100s) **£150-£200**

## Mixed Lots

- 119 An all World accumulation of cinderellas, locals and revenues in two cartons, incl. Denmark, Germany, Great Britain, Southern Africa, U.S.A., revenues, locals, bogus, telegraphs, etc. (1,000s) **£500-£600**
- 120 An all World accumulation in six albums, four stockbooks, leaves and loose, contained in eight cartons, incl. Belgium with a duplicated range of railway stamps, Germany, Great Britain, New Zealand, thematic exhibitions, covers and cards, revenues, ephemera, etc. (many 1,000s) **£400-£500**
- 121 An all World accumulation of revenues and cinderellas in six stockbooks, three folders and loose in packets, incl. France, Germany, India, U.S.A., etc. with much duplication. (many 1,000s) **£250-£300**
- 122 An accumulation of revenues and locals in two albums, two stockbooks and loose, incl. Belgium, Denmark, Germany, Turkey, etc. (100s) **£200-£250**
- 123 An all World accumulation of cinderellas, locals and revenues in two cartons, incl. Germany, Great Britain, India, U.S.A., Christmas labels, bogus and fantasy issues, etc. (many 1,000s) **£200-£300**
- 124 A thematic selection featuring Hospitals contained in a stockbook, incl. Australia, Great Britain, New Zealand, appeal labels, etc. (240) **£150-£200**
- 125 L **Literature:** A selection in a carton, subjects incl. revenues, Morocco locals, etc. **£100-£120**
- 126 ☒ **Postal Stationery:** A British Commonwealth selection, incl. British Levant, Niger Coast, Zululand, envelopes, postcards, registered envelopes, fair to fine. (36 items) **£180-£200**
- 127 ☒ → - A selection of British Commonwealth airletter sheets in one folder, incl. Australia, Rhodesias, etc. (130) **£80-£100**

## Listed By Country: British Empire and Foreign



Ex 105



135



Ex 131

### Australian States: New South Wales

- 128 **Railway Stamps:** A selection in a stockbook, incl. 1st. series to 3s., 2nd. series, some duplication, etc. (few 100s) **£150-£200**
- 129 **Revenues:** An accumulation incl. mainly Stamp Duty with 1866 to 9s. green, K.E.VII, much duplication, etc. (100s) **£100-£150**
- 130 - 1965 Tax Instalment, tax stamp sheet with £5 (18), £3, £1 (9), 19s., 18s. (9), 3d., also tear-off with £5, £4, 12s. and 9d. **£80-£100**
- 131 **Telegraphs:** 1871 1d. (4), 2d. (3), 6d. (2), unused or mint, also 2s. and 8s. overprinted "SPECIMEN", poor to good. Photo. **£150-£200**

**Australian States: Queensland**

- 132 **Railway Stamps:** A duplicated accumulation, arranged by Station name, incl. fifth series to 2s.6d., sixth series, decimals, etc. (approx. 2,000) **£400-£500**
- 133 ☆ **Cairns Mulgrave Tramway** 1897 no watermark 2d. (2), 3d., 6d. (2) and 1s., 1911 no watermark 1d., 3d., 6d., fine unused. **£120-£150**
- 134 **Revenues:** An accumulation incl. Stamp Duty to £5, Impressed Duty to £300, much duplication, etc. (100s) **£100-£150**
- 135 - Beer Duty: 1885 12s.9d., 1889 2s. and 12s.9d., 1885 (bottles) 3d., 6d. (2), 1901 6s.3d. on 6s.6d., 12s.6d. on 12s.9d., fair condition. Photo on page 17. **£150-£200**

**Australian States: South Australia**

136



137

- 136 ○ **Carrier Stamps:** 1890 (c.) W. McCulloch & Co. 6d. Parcel Express stamp used, faults but rare. Elsmore cat. \$A1,100. Photo. **£400-£500**
- 137 ○ - 1894 (c.) J.R. Cocking 6d. Parcels Express stamp, scarce. Elsmore cat. \$A1,000. Photo. **£300-£400**
- 138 **Railway Stamps:** A selection on stockleaves, incl. 1886 to 2s., third series 2d., Silverton Tramway 1897 1d., 1½d. and 3d., etc. (79) **£150-£200**
- 139 **Revenues:** A selection, incl. 1886-96 5s. overprinted "SPECIMEN", K.E.VII 15s. and 50s. used, etc. (100) **£80-£100**

**Australian States: Tasmania**

- 140 **Railway Stamps:** A selection on a stockleaf, incl. 1st. issue ½d., 1d., 2d., 3d., 4d. and 5d. used, etc. (43) **£100-£120**
- 141 - 1939 1d. Newspaper stamp in a block of twelve, unmounted mint, also Telegraph forms (8) used in 1874. **£100-£120**
- 142 - 1960 no watermark to £1, 1965 overprints, 1922 to \$2 (2), all mint, varied condition. (46) **£100-£120**
- 143 **Revenues:** A selection of mainly Q.V. postage stamps used fiscally, incl. 1870 to 10s., etc. (300) **£100-£120**
- 144 - Beer Duty: 1881 4s.6d., 1892 1s.8d. on 1s.3d. (2), 6s. on 4s.6d. (2), 9s. on 6s.9d., 1902 4d. used, 1903 4d. mint, varied condition. (8) **£100-£150**

**Australian States: Victoria**

- 145 **Railway Stamps:** An accumulation on stockleaves, incl. 1876 Echuca ½d., 1d. (2), 3d., 1879 1d. green mint, 1887 ½d. purple-brown mint, good range of decimal issues, many different station names, duplication, etc. (100s) **£250-£300**
- 146 - A selection on stockleaf, incl. ninth series (9), tenth series (125), eleventh series (28 with two 10s.), range of station names, also three Melbourne Tramways. (56) **£100-£120**

- 147 **Revenues:** An accumulation, mainly Q.V., incl. Stamp Duty, heavy duplication, also 1973-78 Wildlife to \$10, etc. (100s) **£100-£120**
- 148 - Beer Duty: 1892 Bottled 4d. mint, 8d. used, 1892 increased rate 6d. mint, 2s. used (poor), 1913 8d. unused, fair to fine. **£100-£150**

### Australian States: Western Australia

- 149 **Coolgardie Cycle Express** 1894 1s. (2), 2s.6d. (2), unused, 1896 6d. (2), 2s. and 5s. (2) unused, poor to good. **£300-£350**
- 150 **Railway Stamps:** A much duplicated accumulation in a stockbook, incl. third and fourth series stamps with values to £1, many different station names, etc. (approx. 2,000) **£800-£1,000**
- 151 - 1905-06 3d. (4), 6d. (2), 1s., 1907-23 1d. (2), 3d. (6), 6d. red. (4), 9d. (4), 1s. (6), 1s.3d. (2), 1s.6d. (6), 2s. (10), 2s.6d. (2), 4s. (3) and 5s., all used, mixed condition. (57) **£100-£120**

### Australia

- 152 **Cinderellas and Revenues:** A selection, incl. Bryce Ltd. Carriers (6d., 9d. and 1s.), City Express, Hayles Magnetic, Tax Instalment (13 values to £2), Western Australia Financial Tax, Queensland Unemployment, etc. (117 items) **£150-£200**
- 153 **Cinderellas:** A duplicated stock in a stockbook, incl. New South Wales, Queensland, etc., mixed condition. (100s) **£100-£150**
- 154 **Railway Stamps:** A duplicated selection in a stockbook, incl. New South Wales, Queensland, Victoria, etc. (100s) **£300-£400**
- 155 **Railway Parcel Stamps:** A selection, incl. large quantity of early Queensland, duplication, etc. (100s) **£150-£200**
- 156 **Tramways and Railways:** A small selection, incl. New South Wales, Queensland, South Australia, Western Australia, etc. (96) **£100-£120**
- 157 **Revenues:** Customs Duty: An accumulation in packets and stockleaves, incl. values to 1s., much duplication, etc. (100s) **£100-£150**



Ex 161

- 158 **Austria:** Cinderellas: A selection of 'bogus' issues, incl. 1874 Vienna Municipal (4), 1917 Occupation of Montenegro (12), 1918 Italian Occupation of Udine, etc. (100) **£200-£250**
- 159 - Danube Steam Navigation Company: An accumulation, incl. local stamps with reprints, range of revenues, etc. (250) **£200-£250**
- 160 ☒ **Bechuanaland:** Postal Stationery: A selection, incl. postcards, registered envelopes, some Specimen overprints, etc. (21 items) **£100-£120**
- 161 ★ - Revenues: Tati Concessions 1896 1s. to £5 set mint, fine with good colours. Barefoot 1-6. Photo. **£150-£200**
- 162 **Belgium:** Cinderellas: A selection of 'bogus' issues, incl. 1914 Charity with essay, King's head proofs, Red Cross, etc. (142) **£150-£200**
- 163 - Locals: Moresnet, a collection on leaves, incl. minor varieties, cards, mint and used, etc. (93) **£200-£250**
- 164 **Brazil:** Revenues: An accumulation in a stockbook and loose, incl. Stamp Duty, Tobacco, duplication, etc. (100s) **£200-£250**



175



Ex 177



- Ex 168 -



174



178

## Canada

- 165 **Revenues:** A collection in two Van Dam printed albums, incl. Bill Stamps, Excise, Law Stamps, Unemployment Insurance Stamps, War Tax, Weights & Measures, Provinces, etc. (100s) **£500-£600**
- 166 - A duplicated selection in three stockbooks, incl. Bill Stamps, Excise, Law Stamps, Provinces, etc. (100s) **£150-£200**
- 167 - A collection in two albums, incl. Bill Stamps, Excise, Law Stamps, War Tax, etc. (100s) **£120-£150**
- 168 - Tobacco: A mainly Q.V. collection in a large stockbook, incl. a superb range of strips and seals for cheroots, chewing tobacco, cigars, cigarettes and snuff, some later to K.G.V etc. (approx. 500 items). Photo. **£700-£1,000**
- 169 - Tobacco: A selection in a folder, incl. strips and seals for cigars, cigarettes, tobacco leaf and snuff, etc. (108 items) **£120-£150**

## China: Municipal Posts of Treaty Ports

- 170 An accumulation in a stockbook, incl. Amoy, Chefoo, Foochow, Kewkiang, Nanking, etc., much duplication. (1,000s) **£500-£700**
- 171 A selection on leaves, incl. Amoy 1896 (Oct. 1) 6c. on 20c. and 10c. on 25c. mint, 1896 (Oct. 6) 6c. on 20c. mint, Chefoo 1893 set mint, 1896 set mint and used, Chungking, Hankow, Kewkiang, Nanking 1897 1c. vertical pair used, also some cinderellas, etc. (few 100s) **£400-£500**
- 172 ☒ **Postal Stationery:** An unused selection incl. Chefoo, Shanghai, postcards, lettercards, some duplication, etc. (83 items) **£250-£300**
- 173 ☒ - A small selection, comprising Chinkiang 1c. postcard c.t.o., Hankow 1c. envelopes used (3), Shanghai postcards (2), wrappers (2) used, envelopes used. (6) **£100-£120**

## China: Wei Hai Wei

- 174 ☆ 1898 2c. black on red Courier Post stamp, rare. S.G. 1, cat. £1,000. Photo also on back cover. **£300-£350**
- 175 ▲ 1898 2c. black on red Courier Post stamp, on piece with two pen strokes, rare. S.G. 1, cat. £1,200. Photo. **£350-£400**
- 176 1899 2c. red Courier Post stamp, three mint singles, unused pair, 5c. green mint (3), poor to fine. **£400-£500**
- 177 ○ 1899 2c. red Courier Post stamp, nine used examples (2 on pieces), also 5c. green used (damaged corner), poor to fine. Photo. **£400-£500**
- 178 ▲ 1899 2c. red Courier Post stamp, used on piece, tied by large Chefoo datestamp and Singapore transit, scarce. Photo. **£300-£350**

## Colombia

- 179 **Cinderellas:** A selection of 'bogus' issues, 1899-1903 Exploration Line (11), also some Panama, etc. (221) **£200-£250**
- 180 **Locals:** An accumulation, incl. Bejuma, Santander with Tabon (2), Ribon and Medellín, some duplication, also a few Mexico, etc. (120) **£150-£200**
- 181 - A selection on leaves, incl. Bejuma, Bogota, Medellín. (78) **£80-£100**
- 182 **Revenues:** An accumulation, incl. duplication, etc. (100s) **£100-£120**

## Cyprus

- 183 **Revenues:** A selection, incl. 1881 1s., 2s., 5s. and 10s. overprinted "SPECIMEN", range of postage stamps used fiscally with K.G.V £1 (3), etc. (200) **£120-£150**



Ex 191



Ex 226



228

### Denmark

- 184 **Cinderellas:** An accumulation of local and railway stamps, good range of types, duplication, etc. (100s) £200-£250
- 185 **Ferry Parcel Stamps:** A small selection, incl. Fanø-Esbjerg 10 øre and 15 øre used, etc. (19) £100-£120
- 186 **Locals:** An accumulation in two stockbooks, album and in packets, incl. many different towns, also a range of railway stamps, much duplication, etc. (1,000s) £350-£400
- 187 - An accumulation in a stockbook, incl. heavy duplication, etc. (many 100s) £150-£200
- 188 **Railway Stamps:** An accumulation in a small stockbook and loose, incl. a range of railway companies, many complete sheets, etc. (many 100s) £200-£250
- 189 - An early to modern accumulation, incl. mint and used, etc. (few 100s) £100-£120

### Egypt

- 190 **Interpostal Seals:** A collection in two albums and loose, incl. Alexandria, Dongola, Gedda, Jaffa, Wadi Halfa, etc. (100s) £700-£800
- 191 **Revenues:** A collection on leaves, incl. Salt and Tobacco Tax 1892-1910 plate proofs (5), Match Tax with page from Archives with four superb handpainted proofs for Custom Tax labels circa 1942, Customs, etc. (174) Photo. £250-£300
- 192 - An accumulation, incl. Salt Tax, range of cancellations, a few on documents, duplication, etc. (100s) £100-£150
- 193 - Cigarette Tax stamps, a specialised collection on leaves, incl. a comprehensive range of issues, mainly from 1894 to 1910, multiples, shades, papers, minor varieties, also some cigarette advertising covers and cards, etc., a fascinating group. (approx. 1,000) £1,000-£1,500

**Finland**

- 194 **Railways:** A collection on leaves, incl. State Railways, Loviisa, Borga, Rauman, etc. (148) £150-£200
- 195 **Shipping Companies:** A selection of letter and parcel stamps, comprising Borga (8), Perna (4), Drumse (3), Vulcan (11), Sommaroarna (4), Wanajavesi (16, probably reprints), varied condition. (46) £200-£250

**France**

- 196 **Cinderellas:** Special W.W.I Delandre printed album with a good range of vignettes, also a few other countries, etc. (300) £150-£200
- 197 **Parcel Stamps:** A collection of stamps from 1890, incl. many sheets, part booklets, invoices, etc. (100) £300-£400
- 198 - A collection on stockleaves, incl. 1878 25c. (2), 50c. unused and used, 75c., 1886 25c. (4), etc. (180) £150-£200
- 199 **Railway Stamps:** A selection in a stockbook, incl. wide range of issues, some mint multiples, also a range of Algeria, etc. (100s) £150-£200
- 200 - A mint and used accumulation on stockleaves, incl. issues from 1901 to 1947, duplication, etc. (100s) £150-£200
- 201 **Revenues:** An accumulation in a stockbook, incl. Fiscal Quittances, some Municipals, duplication, etc. (100s) £200-£250
- 202 - An accumulation on leaves and loose, incl. good range of different types, much duplication, etc. (many 100s) £200-£250
- 203 - A collection in an album, incl. Bill of Exchange, Dimensions, Foreign Affairs, some 'Ville' municipals, etc. (100s) £120-£150
- 204 - A duplicated accumulation on pages and loose, incl. Dimensions, Fiscals, Colonies with Indo-China, Reunion, etc. (many 100s) £100-£150
- 205 - A selection in a stockbook, incl. Affiches, Copies, Dimensions, Imperial, duplication, etc. (100s) £100-£120
- 206 **Telegraphs:** 1868 imperforate 25c., 50c. (6), 1f. (5), used, mixed condition. (17) £150-£200
- 207 - 1868 perforated 25c. (2), 50c. (15), 1f. (21), 2f. (25), used, mixed condition. (63) £100-£120
- 208 - 1880 to 1906, a selection incl. 1885-87 3f. used (3), range of cut-outs from postal stationery, two telegraph postcards and two telegraph letter cards unused, etc. (132) £100-£120
- 209 **French Colonies: Algeria:** Railway Stamps: A mint and used selection on leaves, incl. range of issues to 1949, etc. (150) £150-£200

**Germany**

- 210 **Banknotes:** An accumulation in five folders and loose, incl. Inflation Period banknotes, 'Notgeld', good range of issues, etc. (many 100s) £300-£400
- 211 **Locals:** An accumulation in three albums (one printed) stockbook, folder and on leaves, incl. Bochum, Dresden, Strasburg, Stuttgart, Wiesbaden, duplication, range of blocks, etc. (many 100s) £350-£400
- 212 - A duplicated selection in a stockbook, incl. towns from Aachen to Munich, good representation of each town, reprints, etc. (approx. 5,000) £300-£400
- 213 ☒ - An unused and used accumulation of postal stationery, incl. Berlin, Hamburg, Hanover, Mannheim, postcards, envelopes, lettercards, parcel cards, etc. (620 items) £700-£900
- 214 ☒ - A selection of covers and cards, incl. Berlin, Leipzig, etc. (28 items) £100-£120
- 215 **Railway Stamps:** An accumulation in a stockbook, incl. Bavaria, Prussia, good range of later issues, much duplication, also some Railway revenues, etc. (many 100s) £120-£150

**Germany** continued

- 216 **Revenues:** An accumulation on stockleaves, loose in packets, incl. documents, multiples, much duplication, etc. (100s) **£150-£200**
- 217 **Ruhleben Camp:** A mint and used selection, incl. range of issues, also articles and the Camp magazine Christmas 1916, etc. (100) **£150-£200**
- 218 ☒ - A selection of mainly postal stationery (30), and covers (3), mainly unused, varied condition. (33 items) **£350-£300**
- 219 ☒ - 1914-15 a correspondence from a husband to his wife in Scotland, all on postcards (all but one being 'Englanderlager Ruhleben' cards), bearing a range of cancellations. (28 items) **£200-£250**
- 220 ☒ - 1914-18 Christmas cards unused (6) and one used, good to fine. **£100-£150**
- 221 **Heligoland:** An accumulation on leaves and loose, incl. range of stamps with many reprints, postal stationery with parcel cards, a few p.p.c's, forgeries, etc. (100s) **£200-£250**
- 222 S **India:** Revenues: A Q.V. selection with "SPECIMEN" overprints, incl. Special Adhesives to 200r., Share Transfer, Telegraphs to 5r., etc. (35) **£100-£120**
- 223 **Iran:** Revenues: An accumulation in a file box, incl. much duplication, multiples and sheets, etc. (many 100s) **£150-£200**

**Ireland**

- 224 **Cinderellas:** Money Orders 1858 and 1893 'Specimen' books, very unusual, design registered at Stationers Hall and submitted to the Postmaster General. **£100-£120**
- 225 **Forerunners:** A selection, incl. 1912 Imperial Union 1d. green (2, one mint, other unused), 1912-14 Anti-Home Rule 1s. orange mint (3), 1d. red mint (3, one unused), 1916 Manchester Martyrs se-tenant pair, with a range of patriotic labels, mixed condition. (100) **£200-£250**
- 226 - 1914 Home Rule 1d. Hibernia, 1d. Redmond, 1d. Harp, 1912-14 Anti-Home Rule 1d. Carson small head (2, one unused), 1d. Red Hand and 1d. Carson large head, 1916 Erie Puist (2), also three labels, mint, a few imperfections, otherwise fine. (12) Photo on page 22. **£400-£500**
- 227 ☒ **1916 Uprising** picture postcards, incl. real photo, satirical, Sinn Fein Rebellion (3, one used), etc. (12 items) **£150-£200**
- 228 ⚙ **1922-34** Definitives, 1d. booklet pane of three stamps and three labels, unmounted mint, trimmed perfs. at right, otherwise fine. S.G. 72d, cat. £450. Photo on page 22. **£120-£150**
- 
- 229 **Israel:** Cinderellas: A selection, incl. a few Forerunners, range of political stamps, propaganda, etc. (few 100s) **£100-£150**
- 230 **Italy:** Cinderellas: 1908 Messina Earthquake labels, comprising complete sheets with U.S. currency 5c. and 10c., G.B. 1½d., and Germany 10pf. in complete sheets with a further 170 in multiples or singles. **£80-£100**
- 231 - World War II, a selection of political victim labels, fifty-two different. **£100-£120**
- 232 **Jamaica:** Cinderellas: Red Cross labels, selection, incl. 1917 Fred Myers advertising envelope from Kingston to Annotto Bay, bearing 1916 War Tax 1½d. and Red Cross label, 1940 Boy Scout envelope from Kingston to Half Way Tree, bearing K.G.VI ½d. and Red Cross "WAR FUND" label, etc. (40) **£100-£120**
- 233 **Japan:** Revenues: An accumulation, loose in packets, incl. General Revenues, Registration Tax, duplication, etc. (100s) **£100-£150**
- 234 **Madagascar:** A selection, incl. 1886 1½d. unused (S.G. 22), 1895 (Jan.) set used, etc. (26) **£100-£120**
- 235 **Mauritius:** Revenues: A mainly Q.V. selection, incl. Bill of Exchange, Insurance, Internal Revenue, duplication. (few 100s) **£100-£120**

236 **Mexico:** Revenues: An accumulation in two stockbooks, incl. Contribución Federal, Documentos y Libros, Renta Interior, many different types, duplication, etc. (100s) **£150-£200**

237 **Morocco:** Locals: An accumulation on stockcards, incl. Mazagan-Marrakech 1893 10c. used on cover, 1898 5c. to 12p. sets (50) in blocks of twenty-five, Tangier-Tetuan 1897 20c. pairs (3) variety imperforate between, duplications, etc. (100s) **£400-£500**

### New Zealand

238 **Railways:** A selection on stockleaves, incl. Newspaper to 6d. (7), Railway Charges to 5s., also 1d. Express Freighter, etc. (120) **£100-£120**

239 **Revenues:** An accumulation, mainly Q.V., incl. Stamp Duty with values to £5, cypher seals (4), heavily duplicated, etc. (100s) **£200-£250**

240 - A mainly used collection on leaves, incl. 1931-58 to £400, 1939-40 £50 on £50, Law Courts, etc. (88) **£200-£250**

241 - Beer Duty: 1878 3d. used, 1883 6d. (2), 9d., 1s.3d., 4s.6d., 9s. and 13s. used, some faults. (8) Photo. **£250-£300**

### North Borneo

242 ☒ **Postal Stationery:** An unused selection of postcards, incl. 1892 1c. on 8c. (4), 1895 4c. on 8c., etc., fair to fine. (19 items) **£80-£100**

### Norway

243 **Locals:** A duplicated selection in a stockbook, incl. Aalesud to Tromso, a few multiples, etc. (approx. 1,300) **£100-£150**

244 - Spitsbergen, selection, incl. 1906 10 ore blue unused (3), duplicated, etc., varied condition. (55) **£200-£250**

245 - A duplicated selection in a stockbook, incl. mainly Trondheim and Tromso, some multiples, etc., also 2005 catalogue. (800) **£100-£150**

246 ★ **Railway Stamps:** Norges Statsbaner 1 ore to 10,000 ore set of thirty-one values mint. **£100-£120**

247 ☉ **Nyasaland:** Revenues: 1955 1d. to £1 set less 2d. and 3s.6d., fine unmounted mint. **£100-£120**

248 **Peru:** Pacific Steam Navigation Company: A selection, incl. range of forgeries of the 1857 issue, also large 20v., 80v. and 1sol. stamps mint, etc. (163) **£100-£120**

249 **Poland:** Locals: A mint and used selection of W.W.I, incl. Przedborz, Warsaw, duplication, forgeries, reprints, etc. (100s) **£150-£200**

### Russia

250 **Zemstvos:** A mint and used collection on leaves, incl. Belozersk, Bogorocl'sk, Glazov, Kharkov, Tikhvin, Tver, Zadonsk, etc. (approx. 950) **£2,000-£2,500**

251 - A collection on leaves, incl. Bugulma, Cherdyn, Irbit, Kharkof, Solikamsk, Zienkop, a good range of different types, etc. (950) **£2,000-£2,500**

252 - A selection on stockleaves, incl. a range of different types, etc. (330) **£250-£300**

253 **Saint Kitts-Nevis:** Revenues: A selection, incl. 1884 5s. mint plate number single, 1886 locally handstamped 6d. green used, some duplication, etc. (114) **£200-£250**

254 **Sedang:** An interesting, extensive selection of these bogus issues, incl. complete sheets of 35, shades, etc. (few 100s) **£100-£150**



258



259



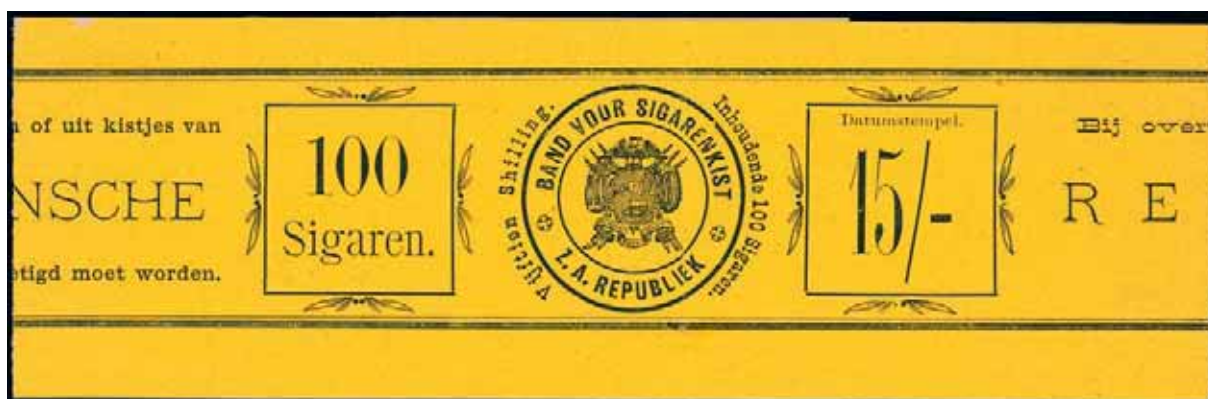
Ex 270



Ex 269



Ex 241



Ex 262

### South Africa

- 255 **Griqualand West: Revenues:** A duplicated selection on stockleaves, incl. range of "G" overprints to £10, 1879 to £5, also some Transvaal, etc. (160) **£100-£150**
- 256 **Orange Free State: Police Frank stamps** 1898 black unused (damaged), and used, 1899 Military Frank Stamp, three used plus 16 forgeries, also Bakkers local (23 unused). (44) **£120-£150**
- 257 - Telegraphs: A selection, incl. 1888 (Apr.) on fiscal stamps 1s. on 9s. (3), used, range of overprints, also some Natal and Transvaal, etc. (190) **£100-£120**
- 258 ★ **Zululand:** 1888-93 5s. rose JH, mint, fine. B.P.A. certificate (1968). S.G. 11, cat. £700. Photo. **£200-£220**
- 259 ○ - 1888-93 5s. rose AD used, fine. B.P.A. certificate (1968). S.G. 11, cat. £800. Photo. **£250-£300**
- 260 **Railway Parcel and Newspaper stamps:** A collection in two albums and stockbook, incl. Cape Town Railway 1867 4d. and 6d. unused, 1876 2d. mint, 1882 1d. to 5d. mint, Natal Government Railways 1880 3d. and 1s. used, 1908 1d. mint, 1909 to 20s. used, Central South African Railways 1909 20s. used (2), South African Railways with Station overprints, Natal perfins, etc. (100s) **£700-£900**
- 261 **Railway Parcel stamps:** A collection on leaves, incl. Cape Town Railway, Central South African Railways, South African Railways, etc. (100s) **£200-£250**
- 262 **Revenues:** Cigar Tax strips, six different values from 3s.9d. to 15s., also Cigarette Tax band, good condition. (7 items) Photo. **£150-£200**

## Spain

- 263 **1894 Melilla Military Stamps**, a selection of mainly different, some used, a few imperforate, etc. (224)  
£150-£200
- 264 **1936 to 1939 Civil War Issues**, an accumulation in two stockbooks and loose, incl. a heavily duplicated range of labels, Charity, also some covers, etc. (many 100s)  
£250-£300
- 265 **Revenues**: An accumulation on leaves and loose, incl. Giro, Stamp Duty, War Tax, duplication, etc. (100s)  
£150-£200

## Switzerland

- 266 **Hotel Posts**: A mint and used selection, incl. Belap, Kurort Stous, Maderanerthal, Rigi Kulm, Rigi Kaltbad, Rigi Scheideck, etc., mixed condition. (260)  
£300-£400
- 267 - A selection on leaves, incl. Belap, Maderanerthal, Rigi-Kulm, etc. (70)  
£100-£150



- 268 -



- 268 - Engelberg: 1880 (no value) black on white, unused and used, scarce. Photo.  
£350-£400
- 269 - Mont Prosa 1882 5c. green used (thin), 1884 olive-brown used (corner fault), 1887 claret two unused, one cancelled, Kurort Stoos 1888-95 yellow-green with red crayon cancellation, (torn). Photo.  
£400-£500
- 270 - Murren 1897 stamps in blue-green, green, olive-brown, light red-brown, brown and claret (corner fault), most without gum, fair to fine. Photo also on back cover.  
£600-£800
- 271 **Revenues**: An accumulation in two stockbooks, inc. Bern, Fribourg, Geneva, duplication, etc. (many 100s)  
£200-£250
- 272 **Soldiers Stamps**: A duplicated unused accumulation in six albums, incl. W.W.I and W.W.II issues, range of regiments and divisions, etc., mixed condition. (100s)  
£400-£450
- 273 - A mainly unused accumulation in three printed albums, incl. W.W.I and W.W.II issues, range of regiments and divisions, etc., mixed condition. (approx. 1,400)  
£400-£450
- 274 - A duplicated mint and used accumulation in two albums, two stockbooks and on leaves, incl. W.W.I and W.W.II issues, also covers and cards, etc., mixed condition. (100s)  
£300-£400

**Turkey**

- 275 **B** **Locals:** Liannos Post Constantinople, 1865 Newspaper stamps, unusually in sheets, comprising Hurt & Williams no. 4 type A on white (25 strikes), type C on white (35 strikes) and no. 11 pale blue (30 strikes), most unusual. **£150-£200**
- 276 - A selection, incl. T.B. Morton, Liannos Post, D.B.S.R., etc. (100s) **£150-£200**
- 277 **Revenues:** An accumulation on leaves and loose, duplication, etc. (100s) **£100-£150**

**United States of America**

- 278 **Carrier Stamps:** An accumulation, incl. parcel delivery, express, tramway, etc. (130) **£150-£200**
- 279 **L** **Literature:** *The Identifier for Carriers, Locals, Fakes, Forgeries and Bogus Posts of the United States* by Larry Lyons in three volumes. **£80-£100**
- 280 **Locals:** An accumulation in a stockbook, incl. a good range of issues, many reprints and forgeries, a few genuine, duplication, etc. (2,500) **£300-£400**
- 281 - A duplicated accumulation on leaves and loose, incl. range of reprints, etc. (100s) **£150-£200**
- 282 **Revenues:** A collection in an album, incl. Medicine with Dally's Galvanic Horse Salve 2c. green, G.G. Green 3c. black rouletted, Perfumery, Playing cards, etc. (298) **£400-£500**
- 283 - An accumulation of Special Taxes on large forms from 1873 to 1885, many with attractive engravings, etc. (few 100s) **£250-£300**
- 284 - An accumulation in a stockbook and on leaves, incl. Narcotics, Newspapers, Playing cards, much duplication, etc. (100s) **£200-£250**
- 285 - A large accumulation in two albums and many packets, incl. Documentary, Internal Revenue, Stock Transfer, Wines, much heavy duplication, etc. (many 1,000s) **£200-£250**
- 286 - Match stamps: A collection on leaves, incl. Bousfield & Poole 3c. black (R) 37a) faults, Cannon Match Co. 1c. green unused, L.G. Hunt 1c. black unused (damaged), etc., mixed condition. (160) **£150-£200**
- 287 - Postal Notes: Three engraved examples dated 1884 and 1888 (2, tax fee 3c.), also nine postal notes dated 1945, each with Postal Note stamps. (12) **£100-£120**
- 288 **State Revenues:** An accumulation in a stockbook, incl. Ohio, Pennsylvania, Tennessee, Texas, Beer, Fruit and Vegetables, Liquor, Prepaid Sales Tax, Tobacco, Vendors Receipt, etc. (many 100s) **£500-£700**
- 289 - An accumulation in a stockbook, incl. Arizona, California, Florida, Georgia, Nevada, New York, duplication, etc. (100s) **£200-£250**
- 290 **Telegraphs:** A collection in an album, incl. American Rapid Telegraph Co., Postal Telegraph Co. 1892-1920 blue-grey imperforate pair mint, Western Union, etc., varied condition. (330) **£300-£400**
- 291 - A duplicated stock in a green stockbook, incl. American Rapid Telegraph Co., Commercial Union, Postal Telegraph Co., Western Union, etc. (100s) **£200-£250**
- Venezuela**
- 292 **La Guaira:** A mint and used accumulation, incl. 1864 4c. black on blue unused with R.P.S. certificate (1977), sheets, some forgeries, etc. (few 100s) **£200-£250**

*Second Session, Lots 293 – 701**Tuesday 21st April at 2 pm***Great Britain****Collections & Mixed Lots**

- 293** A mainly mint or unused collection Q.V. to K.G.VI in a Windsor album, incl. 1840 1d. black CF unused and cut into, 1864-79 1d. plate numbers to 225 (not complete), 1855-57 watermark large garter 4d. unused, 1862-64 3d. TH unused straight edge at right, 1873-80 8d. orange TA unused, 1883 or 84 to 1s. unused, 1887-92 Jubilee set, 1913 Waterlow £1 dull blue-green (corner fault), 1934 re-engraved set, etc., mixed condition. (few 100s)  
**£1,800-£2,000**
- 294 S** A Q.V. selection of "SPECIMEN" stamps, incl. 1855-57 watermark small garter 4d. and 1s., 1867-80 3d. plate 8 RI, 10d. BE, 2s. blue with type 2 in blue, 1867-78 watermark Maltese Cross 5s. plate 2 DB, 1873-80 3d. plate 18 SE, 4d. vermilion plate 15 MB, 4d. grey-brown plate 17 OH, 8d. orange EL, 1880-83 3d. on 3d., 6d. on 6d., 1880-81 2d. (2) and 5d. (2) in blocks of four, 1883-84 on blued paper 2s.6d. AC, CH, KF, 5s. BD, HH, Officials with Inland Revenue 1882-1901 1s. dull green, Government Parcels 1883-86 6d. dull green, 1s. orange-brown (2), 1887-90 1s. dull green (2), etc., very mixed condition. (67)  
**£1,800-£2,000**
- 295** A much duplicated mainly used accumulation in a small stockbook, on leaves and loose, incl. 1840 1d. black (66), 2d. blue (18), 1870 ½d. selection incl. plate 9, etc., mixed condition. (100s)  
**£1,400-£1,600**
- 296** A Q.V. to Q.E.II accumulation in six stockbooks, leaves and loose, incl. 1867-78 watermark Maltese Cross 5s. plate 1 DA used, 1887-92 Jubilee sets mint (3), 1912-24 watermark Royal Cypher sets mint (7), Seahorses with 1918-19 2s.6d. mint (8), 5s. mint (4), 1937-47 2d. orange watermark sideways mint (3), Off-Shore islands, much duplication, etc., mixed condition. (many 100s)  
**£1,200-£1,500**
- 297** A K.G.V to Q.E.II accumulation of advertising booklet panes, part panes and singles in two stockbooks and loose, incl. 1929 P.U.C. 1½d. panes (4), 1937-47 1½d. red-brown panes with cylinder numbers (14), much duplication, used on covers, etc. (many 100s)  
**£800-£1,000**
- 298** A Q.V. to Q.E.II accumulation on leaves and loose, incl. 1867-80 1s. green plate 5 EJ 'Stock Exchange' forgery (corner fault), 1880-81 and 1883 or 84 range of values, 1912-24 9d. olive-green mint (3), 1937-47 1½d. red-brown advert pane with "CANCELLED" type 33P, 1948 Silver Wedding £1 in an unmounted mint block of four, Q.E.II with a good range of coils, much duplication, etc. (many 100s)  
**£800-£1,000**
- 299** A Q.V. selection of high values, incl. 1883-84 2s.6d. lilac mint (4), 5s. (2) mint and 10s. mint, duplicated range of used, very mixed condition. (168)  
**£800-£1,000**
- 300** A Q.V. to K.G.V. accumulation in an album and two stockbooks, incl. 1855-57 4d. (7), 6d. (2), 1s. (3), 1902-13 to 1s. mint (12), 1925 Wembley set in unmounted mint blocks of four, 1934-36 photogravure sets (15), much duplication, etc., mixed condition. (100s)  
**£800-£1,000**
- 301** A Q.V. to K.G.V collection of controls in an album, incl. Downey Heads, 1912-24 watermark Royal Cypher to 9d. olive-green (6), 1s. (33), etc., varied condition. (few 100s)  
**£800-£1,000**
- 302** A mainly used Q.V. to Q.E.II collection on leaves, incl. 1855-57 4d. (4), 6d. (2), 1s. (3), 1862-64 3d., 4d. (3), 6d. (3), 9d. and 1s. (2), 1902-13 to 1s. mint (3), etc., varied condition. (few 100s)  
**£700-£900**
- 303** A Q.V. to K.G.VI collection of controls in an album, four stockbooks and on leaves, incl. 1902-13 ½d. and 1d., 1934-36 photogravure with 9d. X35 one bar, 10d. Y36 two bars and 1s. Z36 one bar in blocks of six, postage dues, duplication, etc. (many 100s)  
**£500-£600**

*For the best opportunities to buy and sell  
revenue material, join*

# the Revenue Society

If you collect or deal in revenue stamps or documents from Great Britain, British Commonwealth, Europe, USA, Middle East or the rest of the world, then join the society which caters for your interests, with first-class auctions, regular meetings and an award-winning journal.

Our back catalogue is now available on CD-ROM to members for just £10. Annual membership of the Revenue Society costs £15 (non-UK £20).

For more details or to apply for membership, please write to the Secretary  
Andrew McClellan, 9 Orchard Road, Bromley BR1 2PR, UK  
or visit us online at [www.revenuesociety.org.uk](http://www.revenuesociety.org.uk)

*Here are some lots from our recent members-only auctions.*



**Collections & Mixed Lots** continued

- 304 A Q.V. to Q.E.II accumulation in four albums and twenty-four stockbooks, incl. Q.V. 1d. Stars and plate numbers with 1864-79 1d. plate 225, Q.E.II pre-decimal commemoratives in blocks with 1963 Red Cross phosphor set in unmounted mint blocks of nine, duplication, etc. (1,000s) **£500-£600**
- 305 A mainly used Q.V. to Q.E.II collection in a Windsor album, incl. 1855-57 4d. (7), 6d.(4), 1s. (4), 1862-64 3d. (3), 4d. (4), 6d. (3), 9d. (3), 1s. (2), etc. (few 100s) **£400-£500**
- 306 A small selection of K.E.VII to K.G.V. issues, incl. 1902-10 De La Rue 5s. overprinted "SPECIMEN" type 16, 1924-26 watermark Block Cypher 1d. booklet pane of six overprinted "CANCELLED" type 28, etc., varied condition. (12) **£300-£350**
- 307 A Q.V. to Q.E.II large accumulation in nine albums, fourteen stockbooks, leaves and loose in packets, incl. large duplicated ranges of all periods, Q.E.II with f.d.c's, commemorative cancellations, postage dues, etc. (many 1,000s) **£300-£400**
- 308 A Q.V. to Q.E.II large accumulation of covers, cards and pieces contained in five cartons, incl. military mail, instructional marks, slogan and meter marks, picture postcards, also a range of Ireland, etc. (many 100s) **£300-£500**
- 309 A Q.E.II decimal accumulation in nine folders and loose, incl. presentation and year packs, also Isle of Man, etc. (100s) **£300-£350**
- 310 A duplicated selection of Postage Dues from 1914 to 1975, mainly mint with 1914-63 sets complete, some duplication, etc. (few 100s) **£250-£300**
- 311 A Q.V. to Q.E.II accumulation in ten albums, stockbook, leaves and large quantities in packets, contained in five cartons, incl. Q.E.II pre-decimal commemoratives in blocks and part sheets, PHQ cards, cancellations with a good range of Exhibitions, etc. (many 1,000s) **£200-£300**

**Postal Fiscals**

- 312 A selection incl. 1860-67 watermark type 40 6d. mint (2), 1881 perf. 14 watermark 40 6d. mint, range of covers with 1853-57 1d. ochre used on 1882 cover, much duplication, etc. (100s) **£800-£1,000**
- 313 A mint and used accumulation in a stockbook, incl. multiples, 1878 1d. imperforate colour trial block of six in brown, much duplication, etc. (few 100s) **£400-£500**

**Revenues**

- 314 **Impressed Duty Stamps:** An accumulation in four stockbooks, leaves and loose, incl. values to £30 (2) and £50, cypher labels, heavily duplicated, etc. (many 100s) **£300-£400**
- 315 S **General Duty Embossed:** Selection with vermilion issues to £10, blue issues to £5, mainly with gum, varied condition. (96) **£120-£150**
- 316 P **Agriculture Unemployment Insurance:** 1937 7d. imperforate colour trials in blocks of four, mounted on large H.M.S.O. Harrow sheet, with notes below with colour suggestions, fine and scarce. Photo. **£150-£200**
- 317 **Betting Duty:** 1926-29 issues, comprising 1% 1s., 2s., 2s.6d., 4s., 5s., 10s., £1 and £2 'half' or used tickets, £5 complete (rare), 1928 1% 2s.6d. half ticket, £1 and £75 specimen Betting Duty sheets. (12 items) **£200-£250**
- 318 **Excise (Entertainment Tax):** A duplicated selection, comprising 1916 ½d. (27), 1d. (189), 1½d. (2), 2d. (49), 3d. (59), 4d. (69), 6d. (73), 9d. (12), 1s. (4), 1s.6d., 2s., 3s. (13), 1924 1½d. (2), 4d. (7), 1925 1d. (28), 2d. (26), 3d. (6), 4d. (5), 5d. (4), 9d. (6), 1934 ½d. (360), 1d. (119), 1½d. (41), 2d. (12), 2½d. (24), 3d. (6), 4d. (120), 5d. (9), 6d. (16), 6½d. (2), 1s. (3), 1s.1d. (7), 8½d. (51) and ¾d. (120), many multiples, etc., varied condition. (1,350) **£150-£200**
- 319 - A collection on leaves, incl. 1916 to 5s., 1917 to 1s.6d., 1922 set of 16 overprinted "SPECIMEN", good range of later issues with multiples and five coil leaders (rare), etc. (226) **£200-£250**
- 320 - A study of tax printed on tickets ex the John Chandler collection, incl. issues from 1918 onwards, with background papers and forms, an interesting lot. (220) **£150-£200**





325



328

**Revenues** continued

- 321 P **Excise (Entertainment Tax):** 1931 6d. imperforate plate proof pairs (3) mounted on "Essays for Colour only ENTERTAINMENTS STAMPS" card (118 x 186mm), typed above each pair "To replace 8d", "To replace 5d" and "To replace 6d", also eight blocks of four and pairs (2) in various colours, scarce. Photo. **£200-£250**
- 322 P - 1931 8s. imperforate plate proofs in colours of 8s., 10s. and £1, mounted on "ENTERTAINMENTS TAX STAMPS" card (98 x 149mm), some faults but rare. Photo. **£200-£250**
- 323 **Excise (Entertainment Tax) Ireland:** A selection, incl. 1922-40 values to 2s., Northern Ireland, etc., varied condition. (36) **£100-£120**
- 324 **Hair Powder Tax:** 1786 1d. red die 152, also 1796 Annual Duty embossed certificate. Photo. **£150-£200**
- 325 P **Hat Tax:** 1796 proof of 6d. value for Hat valued between 4s. and 7s., numbered "136", fine. Photo. **£150-£200**
- 326 **Health & Pensions:** A collection on leaves and stockleaves, incl. mint and used, Specimen and School Specimen, National Insurance, etc. (100s) **£800-£1,000**
- 327 **Health & Pensions and Unemployment** stamps, an unused and used duplicated selection in a stockbook, etc. (many 100s) **£150-£200**
- 328 ☒ **Income Tax:** 1916 1d., 2d., 3d., 6d. and 1s. used on 1921 cover from South Benfleet to Westminster, cover a little tatty, otherwise fine. Photo. **£100-£120**
- 329 **Match Tax:** 1871 ½d. blue pane (6 x 4), part pane of twelve, two strips of three and pair all mint, also unused irregular block of eight, mainly fine. **£100-£120**
- 330 - 1871 ½d. blue in a mint block of four, also Bryant & May matchbox label bearing two examples of the this stamp in grey, issued in celebration of the defeat of the bill in the House of Commons. Photo. **£100-£120**
- 331 **Medicine Duty:** A collection on leaves and in a folder, incl. 1875 1½d. and 3d. affixed to card dated "10 AUG 75" with manuscript alterations to the size of the panels, proofs, good range of types, multiples, etc. (100s) Photo on page 71. **£1,000-£1,500**
- 332 **National Insurance:** An accumulation, incl. documents, part filled books/cards, range of stamps (duplicated), etc. (100s) **£400-£600**
- 333 - 1976 (c.) Decimal issues on Harrison & Sons presentation cards, comprising £2.45 (2, one overprinted "ISLE OF MAN"), £2.55 (2, one overprinted "N IRELAND" and both perforated "SPECIMEN"), £2.66 (2, one overprinted "ISLE OF MAN" and both perforated "SPECIMEN"), £3.62 (2, one overprinted "N IRELAND" and both perforated "SPECIMEN"), also two undenominated imperforated proofs in red and green, green and red, £5.85 imperforate proof in blue and red, scarce. Photo. **£150-£200**

Revenues continued



336



Ex 333

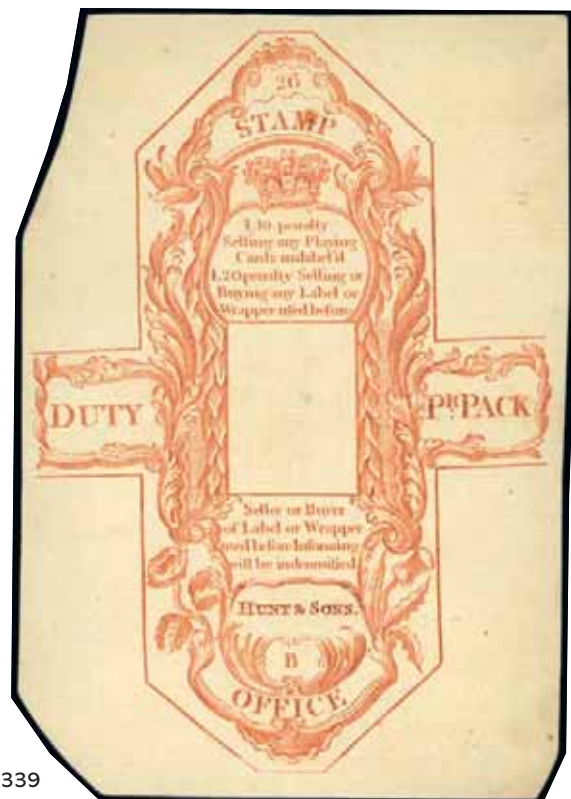
Ex 340



335



338



339

- 334 **Newspaper Stamps:** An accumulation in a stockbook, incl. a large range of cut-outs, some duplication, etc. (100s) **£200-£250**
- 335 **Paper Duty (Wallpaper Tax):** 179(?) strike on edge of wallpaper and two other strikes on small pieces, fragile, rare. Photo. **£150-£200**
- 336 - 1856 English red and black, stamp from plate 6, used in 1860, scarce. Barefoot no. 10. Photo. **£100-£150**
- 337 **Playing Card Duty:** A selection in a folder, incl. De La Rue types (Tax 3d.), for De La Rue, Goodall & Sons, Mardon Son and Hale, John Waddington, etc., 27 are complete with a range of parts. **£250-£300**
- 338 P - Wrapper proof of Hall & Son "A" on laid paper. Photo. **£120-£150**
- 339 - Wrapper proof of Hall & Son "B" on laid paper, also 1817 lottery ticket. Photo. **£120-£150**
- 340 **Railway Rates Tribunal:** 1922 £1 purple and black used, also unlisted 1878 embossed duty 2s. in orange, overprinted "RAILWAY/COMMISSIONERS" Photo. **£120-£150**
- 341 **Record Copyright stamps:** Duplicated accumulation in a stockbook, incl. Chappell & Co. Ltd., H.M.V., Francis, Day & Hunter, etc. (many 100s) **£200-£250**
- 342 **Tobacco Duty Relief:** 1946 to 1954, a small selection of booklets, part booklets, exploded, etc. (24 items) **£100-£150**
- 343 A small selection, incl. 1814 Game Certificate, 1896 Carriage Licence, 1896 Male Servant licence, wax seal of the Inspector of Stamping, etc. (29 items) **£150-£200**
- 344 An accumulation in a stockbook, incl. Bankruptcy, Chancery Court, Civil Service, Common Law Courts, Companies Registration, Consular Service, Foreign Bill, Ireland with Registration of Deeds 1881 set overprinted "SPECIMEN", Judicature Fees 1876 1d. die proof on glazed card (92 x 60mm) dated "June 30, 1876", Mayors Court, Probate, Transfer Duty, a good range of Specimen overprints, etc., very mixed condition. (100s) **£1,500-£2,000**
- 345 A selection on stockleaves, incl. Justice Room, Gloucestershire, Northamptonshire, Southampton 1880 to 5s. in sheets, a few proofs, duplication, etc. (100s) **£800-£1,000**
- 346 An accumulation in five stockbooks and loose, incl. Civil Service, Customs Duty, Foreign Bill, Impressed Duty, Judicature Fees, Transfer Duty, much duplication, etc. (1,000s) **£500-£600**
- 347 An accumulation in a stockbook, incl. Consular, Customs, Life Policy, Patent, Northern Ireland, duplication, etc. (many 100s) **£300-£400**
- 348 A selection in a stockbook, incl. Chancery Court, Consular Service, Foreign Bill, Inland Revenue, range of 'Specimen' overprints, etc. (100s) **£250-£300**
- 349 A duplicated accumulation in a stockbook, incl. Consular Service, Contract Note, Customs, Foreign Bill, Mayor's Court, etc. (many 100s) **£200-£300**
- 350 A small selection incl. Coffee Tax, Customs Duty, good range of Jersey, etc. (few 100s) **£150-£200**
- 351 An accumulation loose in packets, incl. Bankruptcy, Consular, Foreign Bill, much duplication, etc. (many 100s) **£150-£200**
- 352 An accumulation in a stockbook, incl. Foreign Bill, Judicature Fees, much duplication, etc. (many 100s) **£120-£150**
- Private Telegraph Companies**
- 353 A selection on stockleaves, incl. United Kingdom Electric Telegraphs, British & Irish Magnetic Telegraph, London & District Telegraph, etc. (214) **£180-£200**
- 354 A small selection, incl. London District Telegraph Co., Bonelli's, United Kingdom Electric Telegraphs, also some Army Telegraphs and Medicine stamps, etc. (106) **£100-£120**

## Private Telegraph Companies continued



364



Ex 355



371



356



358



Ex 360

- 355 **Bonelli's Telegraph Company Ltd.**, a selection, incl. 1861 6d. imperforate proof in black, 1862 3d. block of six, also a complete booklet of 3d. value (seven sheets of twelve), *stated to be the first booklet ever produced*, etc. (100) Photo. £400-£500
- 356 ★ **The British Telegraph Company** 1855(c.) 2s. black on blue paper watermarked double lined "T", control "3243", mint with large part original gum, natural wrinkles, two thin spots, very rare. *Fewer than ten known*. Photo. £300-£350
- 357 **The British & Irish Magnetic Telegraph Company Ltd.**, a selection, incl. 1859 perf. 11½-12 black control 5s. unused, perf. 13-13½ black control 3d., 6d., 1s. pair, 1s.6d. and 2s. mint, etc. (29) £150-£200
- 358 ☆ 田 **The Electric Telegraph Company**, 1854-61 imperforate 3d. on yellow, an unused block of four (one has small tear at top), without control numbers, scarce. Photo. £150-£200
- 359 - 1854-61 imperforate 1s. on buff, 1s.6d. on pink (2, one without control) 2s. on greenish blue, 4s. on white without control, also 1850 subscribers ticket, poor to fine. £150-£200
- 360 - 1854-61 imperforate Under 50 miles on pink, a pair mounted on card (no control numbers), under 100 miles on blue and above 100 miles on white, scarce. Photo. £150-£200
- 361 ★ - 1859 Directors' Message stamp for Capt. Huish, mint, scarce. Photo also on back cover. £120-£150



- 365 –
- 361
- Ex 370
- 362 **The Electric Telegraph Company**, 1861-64 issues, a selection on leaves, incl. perf. 12 3s. mint, perf. 12½ 2s.6d. mint pair, with initials perf. 12½ to 2s. used, perf. 10 3d., 6d., 1s. and 12s.6d. unused, etc., mixed condition. (46)  
£250-£300
- 363 **The English and Irish Magnetic Telegraph Company**, 1853 1s., 1s.6d. strip of seven, 2s.6d., 4s. and 5s. mint, 4s. with pen strokes, 2s.6d. with broken “T” in “Telegraph”, also nine without controls, mixed condition. (22)  
£150-£200
- 364 ☆ **General Telegraph Company Ltd.**, 6d., rough perf. 13, unused (part original gum), slight imperfections but very scarce. Hiscocks H1. *Considered by Morley to be bogus, no limited company having been registered in this name although a General Telegraph Company of 9 John St., Adelphi, London, run by Francis Wishaw and Nathaniel Holmes, had been active a few years prior to the enactment of the Limited Liability Act of 1855. A connection to the General Private Telegraph Company of Manchester has also been suggested.* Photo.  
£80-£100
- 365 **The London Chatham & Dover Railway Company**, Telegraph stamps, 3d. black on yellow and 1s. black on greyish, unused, some staining, otherwise fine and very rare. *Fewer than ten examples of each exist.* Photo also on back cover.  
£300-£350
- 366 **The London District Telegraph Company Ltd.**, A selection, incl. 1862 3d., 4d. and 6d. unused, 6d. used, etc., varied condition. (14)  
£100-£120
- 367 **The National Telephone Company Ltd.**, 1884, a collection, incl. set of five in complete sheets (3 x 4), 1s. mint vertical pair, variety imperforate between, 1s. bisects on pieces (4), also some ephemera, etc. (17 items)  
£150-£200
- 368 - 1884, a collection on leaves, incl. set of five in complete sheets with extra shades of 1d., 4d. and 6d., 1s. bisects (4) on pieces, 1s. mint block of four variety imperforate horizontally and mint single imperforate vertically at left, etc. (115)  
£150-£200
- 369 - 1884, an accumulation, incl. complete sheets, much duplications, etc. (100s)  
£100-£120
- 370 **The South Eastern Railway Electric Telegraph Company**, Perf. 12 1s.2d. and 1s.6d., perf. 9 2s.3d., 2s.9d., mint, fresh appearance, scarce. Photo.  
£150-£200
- 371 P **The Submarine Telegraph Company**, 1861 imperforate cut down die proofs in black on glazed paper, 7s.6d. and 8s., mounted on sunken card (110 x 80mm), fine and rare. Photo.  
£250-£300
- 372 **The United Kingdom Electric Telegraph Co. Ltd.**, 1862-67 collection on leaves, incl. vertical format 1s. without control mint, range of issues, etc., mixed condition. (41)  
£250-£300
- 373 **The Universal Private Telegraph Company**, 1864, a selection, incl. multiples with two half sheets of fifty, etc. (280)  
£150-£200
- 374 - 1864, a selection, incl. multiples, range of control colour, etc. (240)  
£150-£200

## Military Telegraph Stamps



Ex 375



Ex 379



Ex 380



Ex 381

- 375 S 1884–85 1d. to £1 set overprinted “SPECIMEN”, values to 10s. type 9 and £1 type 11, additional 10s. with unusual Specimen overprint (18 x 2.5mm), one 10s. and £1 have slight crease, others fine. Hiscocks 1-8. Photo. **£150-£180**
- 376 - 1d., 6d. (block of four and single), 1s., 2s., 5s. and 10s. mint, also 3d., 6d. and 5s. used, fair to fine. Hiscocks 1-7. **£150-£200**
- 377 - 2s. (2) and 5s. overprinted “SPECIMEN” no gum, Army telegraphs, etc. (13) **£100-£120**
- 378 1885 stamps of Cape overprinted “Military/Telegraphs” 6d. bright purple, mint and used (3), 1s. green mint pair and two used singles, also 1884-85 Military Telegraphs 5s., 10s. overprinted “SPECIMEN” type 9, £1 with type 11, faults. **£80-£100**
- 379 ★ 1886 Local Cairo overprints 0.1pi. on 1d. to 50pi. on 10s. mainly fine mint. Hiscocks 15-21. Photo. **£120-£150**
- 380 ★ 1887 London overprints 1d. on 1d. to 50p. on 10s., mainly fine mint. Hiscocks 23-31. Photo. **£150-£180**
- 381 S - 1d. on 1d. to 100p. on £1 set overprinted “SPECIMEN” type 9, 100p. on £1 creased, others mainly fine. Hiscocks 23-32. Photo. **£180-£200**



Ex 382



Ex 383



385



386

- 382 S 1895-1900 1d. to £5 set, the 1s., 8d. is in a block of four, also ½d. vermilion, all overprinted “SPECIMEN” type 9, mainly fair to good with gum. Hiscocks 33, 35-46. Photo. **£150-£180**
- 383 ★ - 1d. to £5 set, the 1s. is a pair, extra 6d. block of four, ½d. vermilion single and block of four, ½d. green, mainly good to fine mint. Hiscocks 33, 35-46. Photo. **£250-£300**
- 384 O - 1d. (5), 2d. (8), 3d., 6d., 8d., 1s. (4), 2s.6d. (2), 5s. and 10s. (3), also ½d. vermilion, fair to fine. Hiscocks 33, 36-44 **£250-£300**
- 385 ★ 1900-01 Provisional “TWO PENCE” on 2s.6d., fine mint and very rare. R.P.S. certificate (1972). Hiscocks 47. Photo also on back cover. **£600-£800**
- 386 O - “ONE SHILLING” on 5s., used, tiny stain at base, otherwise fine and scarce. R.P.S. certificate (1983). Hiscocks 48. Photo. **£300-£400**

**Post Office Telegraph Stamps**

- 387 S** A selection of "SPECIMEN" overprints, comprising ½d. type 9 (5), 1d. plate 1 type 9, 1d. plate 2 type 10 (3), 2d. plate 1 type 9 (3), 3d. plate 2 type 9 (2), 4d. type 9 (11 incl. block of four), type 11 (3), 6d. plate 1 types 9 (4), 11 (3), 1d. plate 8 type 9 (3), 1s. brown-orange plate 10 type 9 (4), 3s. type 9 (4), 5s. plate 1 type 9 (3), 10s. type 8 and £1 type 11, very mixed condition. (51) **£380-£420**
- 388 S** A selection of "SPECIMEN" overprints, comprising ½d. type 9 (8 incl. a pair), 1d. plate 2 type 10 (3), 3d. plate 2 type 9 (2), 4d. type 9 (6 incl. a pair), type 11 (2), 6d. plate 1 types 9 (5), 11 (7), 1s. plate 6 type 9, 1s. plate 8 type 9 (3), 1s. plate 10 type 9 (3), 3s. type 9, 5s. plate 1 type 9, 10s. type 9 and 11, £1 type 9, very mixed condition. (44) **£220-£250**
- 389 S** A selection of "SPECIMEN" overprints, comprising ½d. type 9, 1d. plate 1 type 9 (2, one with uncatalogued inverted watermark), 1d. plate 2 types 9 and 10, 3d. plate 1 types 9 and 10, 3d. plate 2 type 9, 3d. plate 3 type 9 and 11, 6d. plate 1 types 9 and 11, 1s. plate 1 type 10, 1s. plate 3 type 9, 1s. plate 6 type 9, 1s. plate 8 type 9, 1880 1s. brown-orange plate 10 type 9, 3s. plate 1 type 9 and 11, 5s. plate 1 types 9 and 10, mixed condition. (22) **£200-£250**
- 390** A selection of stamps with perfin, comprising ½d. with "C/SGCo", 1d. plate 1 "CORY/C", 1d. plate 2 "B & L/L", "H.R./&Co", "A & BS", 3d. plate 2 "B & L/H" (6 incl. block of four), 3d. plate 3 "JAFFE", 3d. plate 5 "B & Co/B & L", 4d. "D & S", 6d. plate 1 "B & L/H" (block of eight and single), 1s. plate 3 "CORY/C", 1s. plate 7 "N & P", 1s. plate 10 "D & S", 1s. plate 11 "Q", 5s. plate 1 "CS & Co" also strip of three "B & L/H", 5s. plate 2 "D & S" (2, one with many broken pins), 10s. "B & L/H" (with extra "B"), mixed condition. *Some values scarce and four of the dies previously unrecorded on these issues by the Perfin Society.* (34) **£200-£250**
- 391 ★ 田** A mint selection of blocks of four, comprising ½d. (4 blocks of 4 shades), 1d. plate 1, 6d. plate 1 (lower pair is unmounted), 1s. plate 1 marginal with part inscription (lower pair unmounted), 1s. plate 8 (two are unmounted), varied condition. (32) **£150-£180**
- 392 ☆** A mainly unused accumulation in very mixed condition, comprising values to 3s. with ½d. (94), 1d. plate 1 (42), 1d. plate 2 (23), 1d. plate 3 (20), 3d. plate 1 (31), 3d. plate 2 (18), 3d. plate 3 (22), 1881 3d. plate 3 (10), 3d. plate 5 (3), 4d. (11), 6d. plate 1 (15), 1881 6d. plate 2 (5), 1s. plate 1 (12), 1s. plate 2 (3), 1s. plate 3, 1s. plate 5 (2), 1s. plate 6 (4), 1s. plate 7 (3), 1s. plate 8 (6), 1s. plate 9 (5), 1s. plate 10, 1881 1s. plate 11 (8), 3s. (3). (342) **£800-£1,000**
- 393 ☆** A mint or unused selection with values from ½d. to 3s., comprising ½d., 1d. plates 1 to 3, 3d. plates 1 to 3, 1881 3d. plates 3 to 5, 4d., 6d. plates 1 and 2, 1881 6d. plate 2, 1s. plates 1 to 3, 5 to 10, 1880 1s. brown-orange plates 10 and 12, 1881 1s. plate 11, 3s. watermark Spray plate 1, mixed condition. (27) **£300-£400**
- 394 ○** A used accumulation in very mixed condition, comprising ½d. (13), 1d. plate 1 (58), 1d. plate 2 (60), 1d. plate 3 (44), 3d. plate 1 (11), 3d. plate 2 (36), 3d. plate 3 (41), 1881 3d. plate 3 (36), 3d. plate 5 (2), 4d. (20), 6d. plate 1 (62), 6d. plate 2 (8), 1881 6d. plate 2 (7), 1s. plate 1 (5), 1s. plate 2 (8), 1d. plate 3 (4), 1s. plate 4 (50), 1d. plate 5 (32), 1s. plate 6 (13), 1s. plate 7 (19), 1s. plate 8 (6), 1s. plate 9 (14), 1s. plate 10 (12), 1880 1s. brown orange plate 10 (10), 1881 1s. plate 12 (4), 1s. plate 11 (58), 3s. (38), 5s. plate 1 (55), 5s. plate 2 (3), 1880 perf. 14 5s. plate 2 (4), 1881 5s. plate 3 (3), 10s. (34), £1 (14) and £5 (very poor). (785) **£2,000-£2,500**
- 395 ○** A used accumulation of multiples, comprising ½d. block of four, strip of three and pair, 1d. plate 1 strip of three and pair, 1d. plate 2 block of eight and pair, 1d. plate 3 block of nine and three pairs, 3d. plate 1 blocks of six and four, pair, 3d. plate 2 two strips of three, 3d. plate 3 blocks of eight and six, pairs (2), 1881 3d. plate 3 two pairs, 4d. pair, 6d. plate 1 block of four and two pairs, 1s. plate 3 pair, 1s. plate 4 two blocks of four, strip of four and two pairs, 1s. plate 5 blocks of six and four, pair, 1s. plate 10 two blocks of six, strip of three and pair, 1881 1s. brown-orange plate 11 two pairs, 1s. plate 12 pair, 3s. watermark Spray strip of three and pair, 5s. plate 1 block of four, varied condition. (163) **£800-£1,000**
- 396 ○** A used selection with values from from ½d. to £1, comprising ½d., 1d. plates 1 to 3, 3d. plates 1 to 3, 1881 3d. plate 3, 4d., 6d. plate 1 and 2, 1881 6d. plate 2, 1s. plates 1 to 10, 1880 1s. orange-brown plates 10 and 12, 1881 1s. plates 11 and 12, 3s. watermark Spray plate 1, 5s. plates 1 and 2, 10s. and £1 (vertical crease), varied condition. (33) **£450-£550**
- 397 ○** A selection of stamps with cancellation interest, being mainly from smaller seldom seen offices, incl. ½d., 1d. plate 1 (9), plate 2 (2), plate 2 (2), 3d. plate 2 (6), plate 3 (5), 1881 3d. plate 3 (2), 4d. (3), 6d. plate 1 (2), plate 2 (2), 1s. plates 2, 3, 4 (4), 5, 6 (2), 7 (2) and 10, 1880 1s. brown-orange plate 10, 1881 1s. plate 11 (7), 3s. watermark Spray (2), 5s. plate 1 (7), 10s. (3), very mixed condition. (66) **£350-£450**

**Post Office Telegraph Stamps** continued

- 398 ○ A selection of stamps with Railway numeral cancellations, comprising English Station offices with numbers in circle 1d. plate 1 “1102”, “1231”, 1d. plate 2 “1192”, 3d. plate 2 “1192”, “1442”, 1s. plate 1 “717”, “1021”, 1s. plate 4 “229”, 1s. plate 5 “1034”, “1192”, 1s. plate 6 “278”, 1s. plate 7 “1567”, 1s. plate 9 “1118A”, 1s. plate 10 “8120”, 5s. plate 1 “308”, 5s. plate 2 “1016”, 10s. “973”, used at Scottish Railway stations with numbers in rectangles, 1d. plate 2 “96” in blue, 3d. plate 1 “176” in blue, 3d. plate 2 “106”, 6d. plate 2 “169”, 1s. plate 4 “4” (block of four), “87”, “88”, “101”, 1s. plate 6 “106”, 1880 1s. brown-orange plate 10 “83”, 1s. plate 11 “97”, “12?”, used at Irish station offices with numbers in diamonds 3d. plate 2 “2?”, 3d. plate 3 “9”, mixed condition. (34) **£350-£400**
- 399 ○ A selection of stamps with postal cancellations (mostly duplex), comprising ½d. (10, incl. one on “circular” front and two pairs on pieces), 1d. plate 1 on piece, 3d. plate 1, 3d. plate 2, 3d. plate 3 (4), 6d. plate 1 (3), 1s. plates 1, 2, 3, 5, 7, 1881 1s. brown-orange plate 11, 5s. plate 1 with Irish diamond, very mixed condition. (28) **£120-£150**
- 400 ○ A selection of stamps with pen cancellations, comprising 3d. plates 1, 2 (2) and 3, 1881 3d. plates 3 and 5, 1s. plates 6, 7 and 10, 1s. brown-orange plate 10, 1881 1s. 11 and 12, mixed condition. (12) **£100-£150**
- 401 ○ A selection of stamps with coloured telegraphic cancellations with blue, purple, mauve, greenish and red, comprising 1d. plate 2 (2) and 3, 3d. plate 3 (2, one with red “LONDON E.C. POSTMASTER/MY 28/80” c.d.s.), 4d., 1s. plates 6 (2) and 10, 1881 1s. brown-orange plate 11 (2), 5s. plate 2 (2), very mixed condition. (13) **£100-£150**

**Post Office Telegraph Stamps – 1876 Watermark Shamrock One Penny**

- 402 P 1d. red-brown imprimaturs, plates 2 SL, 3 SL, 4 BL, 5 RA, all with registration dates in pencil on reverse, also 1880 ½d. orange plate 5 RC, faults. **£150-£180**
- 403 ▲ 1d. red-brown plate 1 BJ, BK, plate 2 GD-HD and SG, TG used on complete Post Office Telegraph forms (3), also plate 1 JB-JC, PG-PH and SD-SC pairs used on pieces, good to fine. S.G. L202. L203. **£120-£150**
- 404 1d. red-brown with watermark inverted, comprising plate 1 AB unused, EI used with purple Threadneedle Street c.d.s., plate 2 JI used, plate 3 IA used, plate 1 uncatalogued used and plate 3 not catalogued, fair to fine. S.G. L202a, L203a, L204 var. **£150-£180**
- 405 ★ 田 1d. red-brown plate 2 NB-OC mint block of four, NB and NC affected by vertical crease, OC is unmounted, otherwise fine and rare. *Very few blocks of four known.* S.G. L203a, cat. £1,100+. Photo. **£200-£250**



405



406

**Post Office Telegraph Stamps – 1876 Watermark Spray Three Pence**

- 406 田 S 3d. plate 1 DE-EF imperforate colour standard block, overprinted “SPECIMEN” type 10, fine with gum (two are unmounted). S.G. L205t. Photo. **£180-£200**
- 407 ★ 3d. plates 1 JC, 2 CK, 3 EL, 1880 watermark Crown sideways/sideways inverted plate 3 JK, 4 NE and 5 HJ, mint, a few imperfections, otherwise fine. L205-L210. Photo. **£200-£250**
- 408 3d. plates 1 CI unused (corner fault), LC mint (creased), LL used, plate 2 BA used, all with watermark sideways-inverted, also 3d. plate 3 EI with indistinct watermark, and 4d. sage-green IF (missing corner perf.) watermark sideways-inverted used, varied condition. S.G. L205a, L206a, L211a. **£180-£200**
- 409 P 3d. plates 2, 3, 4, 5 imprimaturs all lettered BL with the registration dates in pencil on reverse, small part original gum, good to fine. *Only eight or nine of each value are in private hands.* Photo. **£300-£350**



Ex 407



Ex 409



411

- 410 ○ 3d. plate 2 with 1876 (Oct. 31) c.d.s., 4d. plate 1 with 1877 (Apr. 7) c.d.s., 1876 1s. plate one with 5th. February 1876 c.d.s., plate 10 with 1880 (Mar. 2) c.d.s., also 10s. with 1877 (Mar. 23) c.d.s. *Each the earliest known date.*  
£80-£100
- 411 P 3d. plate 3 RC plate proof on dull white paper, fine. *Rare, originally part of a block of six of which three are now held in institutions.* S.G. L207 P. Photo.  
£300-£350

### Post Office Telegraph Stamps – 1881 Watermark Crown Three Pence



412



Ex 413



414

- 412 P 3d. CJ perforated colour trial in green, watermark sideways inverted, a few minute marks on front, otherwise fine with gum. *These trials originally came to the market as blocks of twelve in the three colours. The blocks when split became sets and five are in private hands. The Phillips collection in the British Postal Museum & Archive is missing this trial.* Photo.  
£600-£800
- 413 P 3d. plates 3 SJ, (watermark sideways inverted), 4 KA, 5 KA and KC imprimaturs, all with pencil registration dates on reverse, KC without gum, a few minor imperfections, otherwise fine. *Only nine or ten examples of plates 3 and 5 are in private hands.* Photo.  
£300-£350
- 414 P 3d. plate 4 NJ plate proof on dull white paper, fine and rare. *Originally part of a block of six of which three are held in institutions.* S.G. L209 P. Photo.  
£350-£400
- 415 ○ 3d. plates 3 MC-ND, 4 BF and 5 PI-PJ with watermark sideways/sideways inverted, fine and rare. S.G. L208-L210. Photo.  
£300-£350



Ex 415



- 416 -



417

### Post Office Telegraph Stamps – 1877 Watermark Large Garter Four Pence

- 416 P 4d. sage-green plates 1 BL (small thin) and 2 CJ without gum, imprimaturs. *Only nine examples of plate 1 and around twice as many of plate 2 are in private hands.* Photo.  
£120-£150
- 417 田 P 4d. sage-green plate 1 ME-NE, imperforate block of four, overprinted "SPECIMEN" type 9, fine with gum (two are unmounted). S.G. L211t. Photo.  
£120-£150

## Post Office Telegraph Stamps: 1877 Watermark Large Garter Four Pence continued



418



419

- 418 P 1883 4d. blue green plate 1 AA imperforate colour trial plate, watermark Crown. *Of the greatest rarity, unpriced by Gibbons and believed unique in private hands. The adjacent trial lettered AB is in the Langmead collection in the British Library and is endorsed in manuscript "Experimental on Crown 15. 10. 83".* Photo. £3,000-£4,000

- 419 P 1883 4d. blue green plate 2 AA imperforate colour trial, watermark Crown. *Of the greatest rarity, unpriced by Gibbons and believed unique in private hands. The adjacent trial lettered AB is in the Langmead collection in the British Library and is endorsed in manuscript "Experimental on Crown 15. 10. 83".* Photo. £3,000-£4,000

## GB Post Office Telegraphs

We would like to thank Dr Ian Pinwill for his help and assistance with the Post Office Telegraphs section. Currently he and Paul Ramsay are compiling a website cataloguing, where possible, all the known information on these issues into one easily accessible place of reference.

This includes a great deal of detail extracted from a database of well over twenty thousand items put together by Ian over the past two decades. All aspects are covered from proof material through to the issued stamps with an emphasis on the relative scarcity of each variety, particularly through sheet reconstructions from known proof and specimen material.

This is an ongoing project that will be regularly updated as additional information becomes available. The authors would therefore be grateful for any feedback and scans of additional material that people would be so kind as to provide. The website can be accessed through the link given below, which also provides a contact to the authors.

<https://sites.google.com/site/gbtelegraphs/home>





422



424



426



430



– 420 –




– Ex 423 –




Ex 425

### Post Office Telegraph Stamps – 1877 Watermark Spray Six Pence

- 420 P 6d. grey plate 1 BL imprimatur and 1881 watermark Crown sideways-inverted plate 2 SF (touched at left) imprimatur, minor imperfections. *Only nine examples of plate 1 and approx. twice that of plate 2 are in private hands.* S.G. 212 P. Photo. **£100-£150**
- 421 6d. grey plate 1 MG imperforate colour standard overprinted “SPECIMEN”, SG imperforate with “SPECIMEN” type 8 (crease and nick at right), also EB used on piece of telegraph form, tied by neat “SHEPTON MALLET/SP 25/77” c.d.s. **£80-£100**
- 422  S 6d. grey (slightly deeper than issued colour), KE-OH imperforate colour standard, complete pane of 20 on gummed paper, overprinted “SPECIMEN” type 11, showing marginal inscription “TELEGRAPHS SIX PENCE”, horizontal crease, faint hinge toning at top, otherwise fine. S.G. 212t. Photo. **£600-£800**

### Post Office Telegraph Stamps – 1876 Watermark Spray One Shilling Green

- 423 P 1s. green plates 1 to 12 set of imprimatur, without gum, with varying degree of colour washing and wrinkling. *A rare set as no more than nine of each value are known in private hands.* Photo. **£500-£600**
- 424 P 1s. green plate 1 imperforate colour standard DE-EF block, overprinted “SPECIMEN” type 10, also single MG, fine with gum (two are unmounted). S.G. L215t. Photo. **£150-£200**
- 425 ★ 1s. green plates 1 to 10, most with gum, a few imperfections, otherwise fine and fresh set. S.G. L215-L224. Photo. **£250-£300**
- 426  P 1s. green plate 4 imperforate colour standard LG-OH block of eight (being two rejoined blocks of four), overprinted “SPECIMEN” type 10, LG just touched at right, otherwise fine with gum. S.G. L218t. Photo. **£180-£200**

**Post Office Telegraph Stamps: 1876 Watermark Spray One Shilling Green** continued

- 427 1s. green plates 4 KF used, 5 GB mint and HJ used, 7 IK used, JH used (straight edge at base), 1881 watermark Crown sideways 1s. brown-orange plate 11 EB mint (corner fault), ID-JD used pair and RC used, fair to fine. S.G. L218a, L219a, L221a, L222a, L227. **£200-£250**
- 428 ○ 1s. green plate 6 TH, a used imperforate with a part single strike of "NEWCASTLE ON TYNE QUAYSIDE/OC 11/78" c.d.s., very large margins at top and base, close at sides. *An uncatalogued imperforate which is not an imprimatur, most unusual.* S.G.L220 var. Photo. **£80-£100**
- 429 P 1s. plate 8 imperforate plate proof in black on white wove unwatermarked paper, fine and rare. *Originally part of a block of eight from the right of the sheet of which three are held in institutions.* S.G. L222P, cat. £725. Photo. **£400-£450**
- 430 ★ ㊦ 1s. green plate 8 PE-RH mint block of twelve from the left of the pane (ten are unmounted), showing inscription "TELEGRAPHS ONE SHILLING", minor perf. faults at base and RE has small thin, otherwise very fine. S.G. L222. Photo on page 43. **£250-£300**



428



429



Ex 431



433

**Post Office Telegraph Stamps – 1880 Watermark Spray One Shilling Brown-Orange**

- 431 ★ 1s. brown-orange plates 10 DF, 12 BF, 1881 watermark crown sideways-inverted 1s. brown-orange plate 11 MG, watermark Crown sideways 1s. brown-orange plate 12 HG, mint, mainly fine. S.G. L225-L228. Photo. **£200-£250**
- 432 ○ 1s. brown-orange plate 10 FD-GD pair, plate 12 KG, 1881 watermark Crown sideways-inverted plate 11 FE-GE pair, watermark Crown sideways plate 12 HL-IL pair, mainly good to fine used with c.d.s. cancellations. S.G. L225, L226, L227b, L228. **£180-£200**
- 433 ☆ 1s. brown-orange plate 12 SC without gum and some ink marks on surface, 1881 watermark Crown sideways 1s. brown-orange plate 12 AD, touched at left with top margin folded down and adhering to gum. S.G. L226, L228. Photo. **£120-£150**

**Post Office Telegraph Stamps – 1877 Watermark Spray Three Shillings**

- 434 ㊦ P 3s. grey-green AA-ED imperforate colour trial complete pane of twenty overprinted "SPECIMEN" type 8, with marginal inscription "TELEGRAPH THREE SHILLINGS" plate number and duty, on gummed paper (all unmounted), a few gum wrinkles, small portion cut out from top margin, otherwise fine and rare. S.G. L229 P. Photo. **£800-£1,000**



- 435 P 3s. claret AI-EL imperforate colour trial complete pane of twenty overprinted “SPECIMEN” type 8, (colour incorrectly written as dull mauve on reverse) with marginal inscription “TELEGRAPH THREE SHILLINGS” current number “523”, on gummed paper (all unmounted), gum wrinkles, otherwise fine and rare. S.G. L229 P. Photo. £800-£1,000
- 436 P 3s. dull mauve KC-LD imperforate colour trial block of four overprinted “SPECIMEN” type 8, on gummed paper (two are unmounted) showing part inscription “TELEGRAPHS TH”, also TH single in brown-lilac (no gum). £80-£100
- 437 P 3s. slate-blue KI-LL imperforate colour trial block of eight from the left of the pane, overprinted “SPECIMEN” type 8, showing marginal inscription “TELEGRAPHS THREE SHILLINGS”, on gummed paper (seven unmounted), a few gum wrinkles, otherwise fine. S.G. 229 P. £250-£300



438

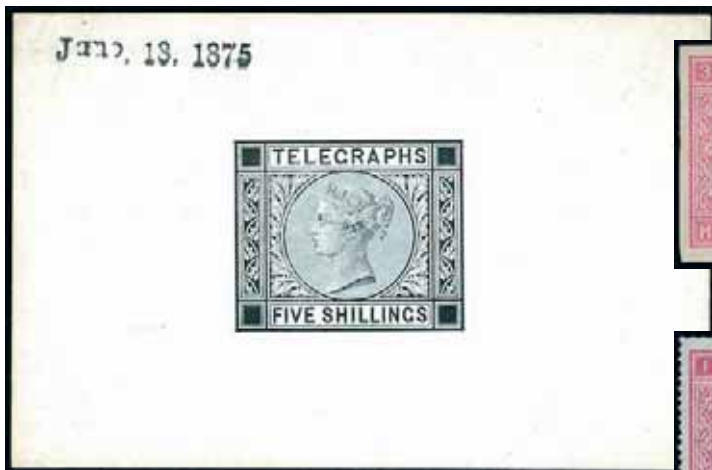


439

- 438 P 3s. slate-blue SC imprimatur, without gum, otherwise fine. S.G. L229 P. Photo. £80-£100
- 439 P 3s. imperforate plate proof TL, printed in black on white wove unwatermarked paper, marginal. *Rare, four held in institutional collections.* S.G. 229 P. Photo. £400-£450



- 440 P 3s. slate-blue AA-ED in a complete pane of twenty with marginal inscription “TELEGRAPH THREE SHILLINGS” plate number and stamped duty, all unmounted mint, a few minor gum creases, otherwise fine and fresh. *This block is illustrated on the back cover of “The Telegraph Stamps and Stationery of Great Britain, 1851-1954” by Langmead & Huggins (2003). S.G. L229. Photo also on inside front cover.* £1,200-£1,500



443



Ex 444



446



447



450



445



451



Ex 452



453



Ex 454



Ex 455



Ex 456



458



459



460



461



462



463



464



441



442

### Post Office Telegraph Stamps: 1877 Watermark Spray Three Shillings continued

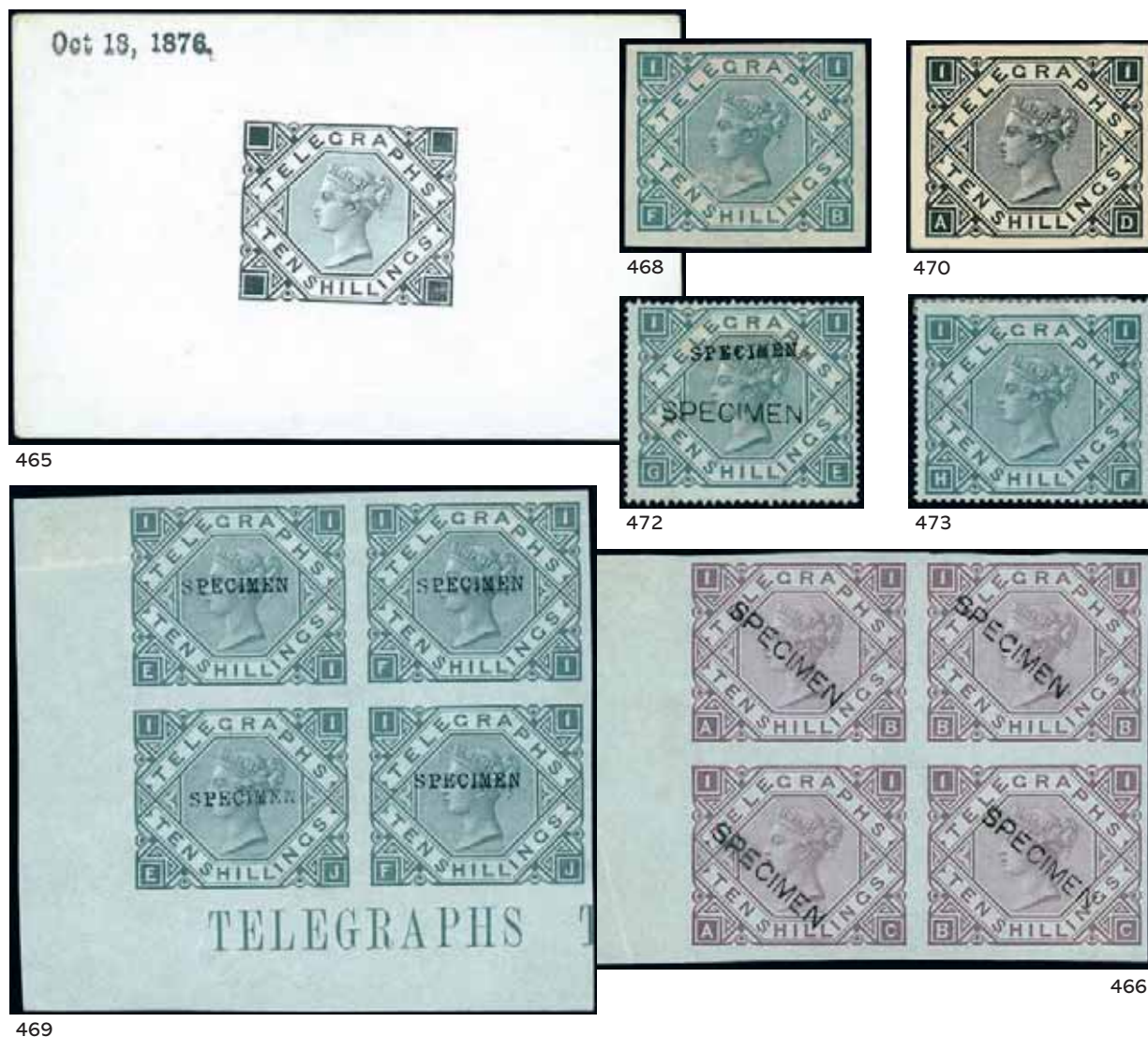
- 441 ○ 3s. slate-blue BF with watermark sideways-inverted, minor stain at lower left corner, otherwise fine used. S.G. L229a, cat. £425. Photo. £120-£150

### Post Office Telegraph Stamps – 1881 Watermark Crown Three Shillings

- 442 ○ 3s slate-blue BE, a very fine used example of this rare stamp with neat part “LIVERPOOL/B/6 OC/81” c.d.s. S.G. Spec. L230, cat. £3,400. Photo. £1,100-£1,300

### Post Office Telegraph Stamps – 1876 Watermark Maltese Cross Five Shillings

- 443 P 5s. die proof with void corner squares, printed in black on glazed card (92 x 60mm), dated “June 18. 1875.”, fine. S.G. Spec. L231, cat. £1,350. Photo. £800-£1,000
- 444 P 5s. rose imprimatus plate 1 HH (some adhesions on front, plate 2 GI, plate 3 HI a little faded, all without gum, fair to fine. Photo. £400-£500
- 445 ▣ P 5s. plate 1 EI-FJ imperforate colour standard block of four from the lower left corner of the sheet on gummed paper (lower pair is unmounted), overprinted “SPECIMEN” type 9, with “TELEGRAPHS” inscription. L231t. Photo. £600-£700
- 446 S 5s. plate 1 CA overprinted “SPECIMEN” types 10 and 9, sweated gum and some blunted perfs. at right, otherwise fine and a most unusual uncatalogued variety. S.G. Spec. L231s, var. Photo. £100-£120
- 447 ★ 5s. plate 1 HD mint, a few blunted perfs. at top, some minor creasing, otherwise fine. S.G. Spec. L231, cat. £850. Photo. £100-£120
- 448 ○ 5s. plate 1, a used large part reconstruction less seven, varied condition. (73). S.G. Spec. L231. £700-£900
- 449 ○ 5s. plate 1, eight used examples, mainly fine to very fine. S.G. Spec. L231. £100-£120
- 450 P 5s. plate 2 HE imprimatur, fine with registration date in pencil on reverse. Photo. £300-£400
- 451 ★ 5s. plate 2 HB, mint, slightly sweated gum, small stain at lower left, otherwise fine and scarce. S.G. Spec. L232, cat. £1,700. Photo. £350-£400
- 452 ○ 5s. plate 2 AG, GE, HD fine used, all with neat c.d.s.’s. S.G. Spec. L232. Photo. £200-£250
- 453 ○ 5s. plate 2 BF-BG used vertical pair, fine with neat Weybridge c.d.s.’s, scarce multiple. S.G. Spec. L232. Photo. £350-£400
- 454 ○ 5s. plate 2 CG with Edinburgh c.d.s. and HA with neat Greenock c.d.s., slightly soiled, otherwise fine. S.G. Spec. L232. Photo. £150-£180
- 455 ○ 5s. plate 2 DD, DE, GE fine used, all with neat Greenock c.d.s.’s. S.G. Spec. L232. Photo. £250-£300
- 456 ○ 5s. plate 2 DJ fine used with neat Ardrossan c.d.s., also EJ with Glasgow c.d.s., slightly soiled. S.G. Spec. L232. Photo. £180-£200
- 457 ○ 5s. plate 2 ED-EE used vertical pair, with neat Elgin c.d.s.’s, both with horizontal creases, otherwise fine and a scarce multiple. S.G. Spec. L232. Photo. £180-£200
- 458 P 5s. plate 3 EI imprimatur, vertical crease, paper adherence on gum, on front has large ink mark on face. *This plate was not formally issued on Maltese Cross paper.* Photo. £100-£120
- 459 P 5s. plate 3 GF imprimatur, with registration date in pencil on reverse, a few gum wrinkles, otherwise fine. Photo. £600-£800




469

### Post Office Telegraph Stamps: 1877 Watermark Maltese Cross Five Shillings continued

- 460 P 5s. plate 3 HI imperforate plate proof in black on white wove unwatermarked paper, fine. *Originally part of a block of ten of which four examples are now held in institutions.* Photo on page 47. **£400-£500**
- 461 O 5s. rose on slightly bluish paper plate 3 AH, used with neat Greenock c.d.s., overall toning, otherwise fine. S.G. Spec. L234, cat. £900. Photo on page 47. **£180-£200**
- 462 O 5s. rose on slightly bluish paper plate 3, BG used with neat Wexford c.d.s., a few perfs. slightly toned, otherwise fine. S.G. Spec. L234, cat. £900. Photo on page 47. **£300-£350**
- 463 O 5s. rose on white paper plate 3 EA, used with neat Cardiff c.d.s., stain at top left and one missing perf., otherwise fine. S.G. Spec. L234, cat. £900. Photo on page 47. **£180-£200**
- 464 O 5s. rose on slightly bluish paper plate 3 GD, used with Liverpool c.d.s. and part of boxed cancellation, a few blunted perfs., otherwise fine. S.G. Spec. L234, cat. £900. Photo on page 47. **£200-£250**

### Post Office Telegraph Stamps – 1877 Watermark Maltese Cross Ten Shillings

- 465 P 10s. die proof with void corners, printed in black on glazed card (94 x 60mm), dated “Oct 18, 1876.”, very fine. S.G. Spec. L235 P, cat. £1,300. Photo. **£600-£700**
- 466  $\square$  P 10s. imperforate colour trial on gummed paper AB-BC block of four from the left of the sheet in brown-lilac, overprinted “SPECIMEN” type 8. Colour written incorrectly as dull mauve in pencil on reverse, heavy crease in margin, otherwise fine. S.G. Spec. L235 P, cat. £1,300+. Photo. **£250-£300**

- 467 P 10s. imperforate colour trials, EF in grey-green, EF in claret (both without gum), also AD-BD pair in ultramarine (slightly faded) with gum, all overprinted "SPECIMEN" type 8. S.G. Spec. L235 P. **£150-£200**
- 468 P 10s. grey-green FB imprimatur, without gum, slight rubbing on front, otherwise fine. *Only around seventeen examples are in private hands.* S.G. 235 P, cat. £1,200. Photo. **£300-£400**
- 469  P 10s. grey-green EI-FJ imperforate colour standard block of four from the lower right corner of the sheet on gummed paper, overprinted "SPECIMEN" type 9, horizontal crease at top, some gum wrinkles, lower pair is unmounted, showing "TELEGRAPHS" inscription. S.G. Spec. L235 P, cat. £2,160+. Photo. **£600-£700**
- 470 P 10s. AD imperforate plate proof in black on white wove unwatermarked paper, fine and rare. *Originally part of a block of six, half of which are now held in institutions.* Photo. **£400-£450**
- 471 S 10s. grey-green EE overprinted "SPECIMEN" type 8, GB overprinted "SPECIMEN" type 11 both without gum, also HC overprinted "SPECIMEN" type 9 with gum but has thin spot. S.G. Spec. L235s. **£100-£120**
- 472 S 10s. grey-green GE overprinted "SPECIMEN" types 8 and 9, small thin, otherwise fine uncatalogued variety. S.G. Spec. L235s var. Photo. **£150-£180**
- 473 ★ 10s. grey-green HF, mint, minor imperfections, otherwise fine. S.G. Spec. L235, cat. £1,500. Photo. **£400-£500**
- 474 ○ **10s. grey-green, a used partial sheet reconstruction, comprising 58 out of the 80 positions, mixed condition.** S.G. Spec. L235, cat. **£18,850.** **£1,200-£1,500**
- 475 ○ 10s. grey-green AB, AB, AI, AF, BB and BE, used, fair to fine. S.G. Spec. L235. **£200-£250**

### Post Office Telegraph Stamps – 1877 Watermark Shamrocks One Pound



476



478



477



479

- 476 P S £1 imperforate colour trial, AJ in slate-blue, on gummed paper, overprinted "SPECIMEN" type 8, fine. S.G. Spec. L236 P, cat. £800. Photo. **£180-£200**
- 477 P S £1 imperforate colour trial BM-BN pair in dull mauve on gummed paper, overprinted "SPECIMEN" type 8, fine and fresh. S.G. Spec. L236 P, cat. £1,600+. Photo. **£300-£400**
- 478 P S £1 imperforate colour trials, BP in grey-green and DT in claret, both overprinted "SPECIMEN" type 8, BP without gum, DT with some gum and small thin, otherwise fine. S.G. Spec. L236 P. Photo. **£150-£200**
- 479 P S £1 imperforate colour trial DM-DN pair in ultramarine on gummed paper, overprinted "SPECIMEN" type 8, fine and fresh. S.G. Spec. L236 P, cat. £1,600+. Photo. **£300-£400**

## Post Office Telegraph Stamps: 1877 Watermark Shamrocks One Pound continued



480



481



482



483

- 480 P £1 imperforate colour standard BM in brown-lilac on gummed paper, overprinted "SPECIMEN" type 9, fine and fresh. S.G. Spec. L236t, cat. £1,300. Photo. **£250-£300**
- 481 S £1 brown-lilac AC, overprinted "SPECIMEN" types 11 horizontal and type 9 vertical, with gum, a few blunted perms., otherwise fine uncatalogued variety. S.G. Spec. L236s var. Photo. **£200-£250**
- 482 S £1 brown-lilac BQ, overprinted "SPECIMEN" type 8, unused, a few minor imperfections, otherwise fine. S.G. Spec. L236s, cat. £850. Photo. **£150-£200**
- 483 S £1 brown-lilac CK, overprinted "SPECIMEN" type 9, with gum, reperforated at base, a few blunted perms., otherwise fine. S.G. Spec. L236s, cat. £850. Photo. **£100-£150**



484



485



Ex 486



488

- 484 S £1 brown-lilac CR, overprinted "SPECIMEN" type 9, with gum, fine and fresh with strong colour. S.G. Spec. L236s, cat. £850. Photo. **£200-£250**
- 485 ☆ £1 brown-lilac DD, unused with part original gum, small repaired tear at left and some staining, nevertheless a rare stamp. S.G. Spec. L236, cat. £6,750. Photo. **£400-£600**
- 486 ○ £1 brown-lilac AD, BC, DC, DE, average used examples, fair to good. Photo. **£200-£220**
- 487 ○ £1 brown-lilac BK-BL pair and BO all used with Glasgow c.d.s's, some faults. S.G. Spec. L236. **£120-£150**
- 488 ○ £1 brown-lilac CH, a good used example with c.d.s's and part boxed cancellation, good deep colour. S.G. Spec. L236, cat. £850. Photo. **£100-£150**
- 489 ○ £1 brown-lilac DD, a good used example with c.d.s. and boxed cancellations, red crayon line, good deep colour. S.G. Spec. L236, cat. £850. Photo. **£100-£120**
- 490 ○ £1 brown-lilac CG, a good used example with c.d.s's. and boxed cancellations, good colour, small thin. S.G. Spec. L236, cat. £850. Photo. **£100-£120**



489



490

### Post Office Telegraph Stamps – 1877 Watermark Shamrocks Five Pounds



491



492

- 491 P £5 CD imperforate colour trial in gold on gummed watermarked paper, without the Specimen overprint, a few gum wrinkles and slight rubbing at top, otherwise fine and rare. From the sheet of 58, only 24 are without overprint and of these four are held in institutions. S.G. Spec. L237 P, cat. £5,000. Photo also on page 1.  
£1,400-£1,600

- 492 P £5 CD imperforate colour trial in slate-blue on gummed watermarked paper, overprinted "SPECIMEN" type 8, fine. S.G. Spec. L237 P, cat. £1,300. Photo. £500-£600



493



494

- 493 P £5 DI imperforate colour trial in grey-green on gummed watermarked paper, overprinted "SPECIMEN" type 8, fine. S.G. Spec. L237 P, cat. £1,300. Photo. £500-£600
- 494 P £5 CI imperforate colour trial in dull mauve on gummed watermarked paper, overprinted "SPECIMEN" type 8, fine. S.G. Spec. L237 P, cat. £1,300. Photo. £500-£600



495



496

- 495 P £5 orange BJ imprimatur, hinge stain, without gum, corner crease and trace of manuscript on reverse. A very scarce proof with about twelve remaining in private hands, some of which have been provided with faked perforations. S.G. Spec. L237 P, cat. £10,000. Photo. £1,800-£2,000
- 496 P £5 CF plate proof in black on dull white card, some paper adherence on reverse, otherwise very fine and extremely rare. Formally part of a block of four CF-DG of which only three remain in private hands. S.G. Spec. L237 P. Photo also on back cover. £3,500-£4,000

## Post Office Telegraph Stamps: 1877 Watermark Shamrocks Five Pounds continued



497



498

- 497 S £5 orange BF overprinted "SPECIMEN" type 8, without gum, a few blunted perms., otherwise fine. S.G. Spec. L237s, cat. £2,400. Photo. **£300-£400**
- 498 S £5 orange CC overprinted "SPECIMEN" type 9, with gum (heavily mounted), light staining at top, otherwise fine. S.G. Spec. L237s, cat. £2,400. Photo. **£300-£400**
- 499 O £5 orange AD, used with c.d.s. and boxed cancellations, trivial light stain at right, otherwise fine. S.G. Spec. L237, cat. £2,700. Photo. **£400-£500**



499



Ex 504



Ex 505

## Carrier Stamps

- 500 **Circular Delivery Company Stamps:** An accumulation in two stockbooks and packets, incl. Clark & Co., Edinburgh and Leith, London, Glasgow, Metropolitan, much duplication, some forgeries, etc. (many 100s) **£400-£500**
- 501 - A selection, incl. many reprints or forgeries, many blocks and part sheets, etc. (100s) **£120-£150**
- 502 **Bristol Parcel Delivery Company:** 1887 1d. black, 1d. red (3), 1894 1d. and 2d. (3), 1896 2d. and 1900 2d., all used, mixed condition. (10) **£180-£200**
- 503 **Globe Parcel & Express Ltd.:** A selection, incl. Birmingham, Leeds, Liverpool and Edinburgh, different types, etc., mixed condition. (44) **£200-£250**
- 504 **Leeds, Marshall Bros. Parcel Express:** 1895 2d. perf. 10 and 1900 2d. with "CITY", used, scarce. Photo. **£300-£350**
- 505 **Liverpool:** A selection comprising Curtis & Co. 1867 1d., 2d., 3d. (3), 4d. and 6d., Luggage & Parcel 1873 4d. (rare), Parcels & Luggage 4d., J.R. Mercer & Co., 2900 3d., all used, mixed condition. (10) Photo. **£150-£200**
- 506 **Liverpool Parcel Delivery Company:** A collection from 1866 to 1910, incl. 1890 1s., 1903 headed notepaper, some duplication, etc., mixed condition. (95) **£300-£400**

- 507 **London:** A selection with London Parcels Delivery Co. Ltd. 1850 Alfred Haley 3d., 4d., 'Carriage Paid' and 2/3rds the same, 1853 Chas Norman Carriage Pre Paid on pink, on white, on mauve, on pale pink, on white (with double control), 1900 Carriage Pre Paid on white and on pink, "PAID" labels in red (2 different) and on white, a rare group, mixed condition. (14) **£350-£400**
- 508 **London, John Barker & Co. Ltd.:** 1903 no value, 1908 'bee' motif (2), 1909 no value maroon, imperf. x perf. 14½. (4) **£100-£120**
- 509 **London Express Parcels Delivery Company Ltd.:** 1864 imperforate 1d, no control, perforated 1d. (3) with control, also printed leaflet with scale of charges, mixed condition. (5 items) **£100-£120**
- 510 **London, Fosters Ltd.:** A selection on leaves, incl. a range of printings, etc. (29) **£100-£120**
- 511 **Manchester, Sutton & Co.:** A selection, incl. 6d. on 3d. (*only recorded example*), 1883 and 1905 1s. values, also three early receipts from Bath, etc. (49) **£250-£300**
- 512 **Manchester Parcel Company:** 1877 selection with values from 2d. to 1s., incl. 2d., 3d., 6d. yellow, 4d., 9d. and 1s. mint, etc. (22) **£200-£250**
- 513 **Newcastle & District Carrying Co. (Sutton & Co.):** 1880 2d. with control, 1880 2d. without control (3), 1890 3d. (2, 9 lines in curl of "3"), Foster's Parcel Express, Newcastle 1905 2d. used, fair to good. (7) **£120-£150**
- 514 A selection comprising Mercer's Liverpool 1912 3d. pair, 4d. strip of three used, W. Williams & Sons 1880 3d. used (scarce), A.W. White & Co. Portsmouth 1d. mint and used, 2d. mint, Maiun Parcel Co., Manchester 2d. used, mixed condition. (10) **£200-£250**
- 515 Selection incl. Pickford & Co. with "PAID" labels, plus 2 letters dated 1933 in firm's envelopes, Carter Paterson & Pickford joint parcel label, Carter Paterson "PAID" and "TOO PAID" labels (5 different), Express & Agency Delivery 1915 mint block of four, H. Bender London label, mixed condition. (15 items) **£150-£200**
- 516 A small selection, comprising Atlas Parcel Express (2), label from Hull, Sutton & Co., Edinburgh & District Parcel Delivery 3d. (2), Scotsman Parcel (circa 1897) and Courant Parcel (Edinburgh Evening Courier). (7) **£80-£100**
- 517 A selection of Tramways, incl. Birmingham & Midlands, Brighton, Manchester Carriage, Manchester Corporation, etc., mixed condition. (97) **£200-£25'**
- 518 An accumulation of modern private carrier 'Express', 'Parcel' and other labels, with DHL, National Carriers, Omega, TNT, etc. (100s) **£100-£150**
- 519 A selection of Bus Parcel stamps, incl. early to modern issues, etc. (117) **£90-£100**
- 520 **1962 Peoples' League Parcel Service**, an accumulation with some covers, 2s.6d. and 5s. handstamped "EUROPE/1962/Air Mail", also 1964 Freedom Group, etc. (few 100s) **£100-£150**

### Cinderellas

- 521 **Aviation:** A selection of labels in a stockbook, incl. B.E.A., Provincial Airways, also some Indian, etc. (200) **£100-£120**
- 522 **Charles Dickens**, 1d. and U.S. 25c. labels in sheets of twelve with original folders, also two other sheets, also some ephemera, varied condition. **£100-£150**
- 523 **Colman's Mustard**, poster stamps and vignettes on sheets, comprising Lemercier (2 plus one damaged) and Hart & Leclercq (4 different). Photo on page 56. **£300-£400**
- 524 - A selection of ephemera incl. early to modern postcards, invoice, coupons, letters, Fruit Series labels, two different booklets, etc. **£300-£400**
- 525 - Four different Hart & Leclercq sheets, each bearing six labels. Photo on page 56. **£200-£300**
- 526 - Vignettes with Lemercier (17), Hart & Leclercq (16), also Coopers Dip, Gloy Sticks, varied condition. **£200-£250**
- 527 - Vignettes with Lemercier (36), Hart & Leclercq (30), varied condition. **£200-£250**

# THE CINDERELLA STAMP CLUB

THE CINDERELLA STAMP CLUB is an international philatelic society of collectors whose interests lie in those stamps which are normally classified as “back of the book” or “beyond the catalogue”. Membership is open to all and currently stands at over 500.

*Membership benefits include:*

**Meetings of the Club** – normally four meetings a year held at The Royal Philatelic Society London offer the opportunity to see major displays from invited guests or visiting societies plus a wide range of Cinderella material from members’ displays.

**Participation in the Club auction** – one room auction and, normally, one postal only auction held per annum. The CSC auction is the largest auction of Cinderella material held in the world and includes a wide range of material to suit most tastes and pockets.

**The Cinderella Philatelist** – the Club journal with articles on a wide range of Cinderella subjects from the leading collectors in their field. Members’ queries offer the opportunity to receive expert advice on aspects of Cinderella collecting.

**Subscriptions** are payable per calendar year, with applications received after 1st October in any year being valid until 31st December of the following year.

*Details are available from the Membership Secretary, David Gottesmann,  
19 School Road, Sible Hedingham, Halstead, Essex, CO9 3NR, United Kingdom  
Email: [dgottesmann@netscape.net](mailto:dgottesmann@netscape.net)*

**Website:** [www.cinderellastampclub.org.uk](http://www.cinderellastampclub.org.uk)



**Cinderellas** continued

Ex 545



Ex 528

- 528 **Court Bureau**, 1890 1d. mint and used, 1½d., 3d., 1s., 2s.6d. and 5s. mint (latter two are damaged), scarce. Photo. **£200-£250**
- 529 **Exhibitions**, A selection from 1909 to 1950, incl. mainly stamps and miniature sheets with 'Boer War' 1d. (3 sheets), etc. (100s) **£150-£200**
- 530 - 1909 to 1966 Philatelic Congress, an accumulation in two large folders, incl. souvenir sheets, covers and ephemera, etc. (100s) **£100-£150**
- 531 - A selection of labels to about 1923, duplication, etc. (few 100s) **£100-£120**
- 532 ★ ☒ - 1924 Philatelic Congress set of four in complete sheets of twelve, fine and very scarce. **£150-£200**
- 533 - 1950 to 1993 an accumulation in two large folders, incl. many souvenir sheets, B.P.E. and smaller exhibitions, duplication, etc. (100s) **£150-£200**
- 534 **Federal Union for World Peace** labels comprising blocks of twelve in violet (2), green, blocks of ten in violet (2), green, orange (2), blue and mauve, blocks of eight in mauve and blue, also 'Join the Peace Pledge Union' label in grey-green. (15) **£150-£200**
- 535 **'Ideal' Stamps**, A selection with orange (5), plate block, postcard and 'poached eggs' with strips, examples used on covers, duplication, etc. (100s) **£100-£120**
- 536 ★ ☒ **Margate Cottage Hospital Extension Fund** labels, 1s. sheet of sixteen in red, scarce. Photo on page 56. **£200-£250**
- 537 ★ ☒ - 2s.6d. sheet of sixteen in black, scarce. Photo on page 56. **£200-£250**
- 538 ★ ☒ - 10s. sheet of sixteen, vertical rows in brown, green, red and blue, scarce. Photo on page 56. **£200-£250**
- 539 ★ ☒ - Two blocks of eight in orange, Saint Bartholomew Hospital Fund, 1939 labels in sheet of twelve in violet, also 27 different Hospital appeal labels. **£150-£200**
- 540 B **Olympic Games**, 1924 British Swimmers Olympic Fund booklet with seven panes of six and one of four, very rare. Photo on page 57. **£250-£300**
- 541 **Post Office School Training Stamps**, A K.G.V to Q.E.II selection, incl. 1934 re-engraved 2s.6d., 1937-47 4d. imperforate pair, 1939-48 5s. red, 10s. ultramarine and £1, 1951 Festival to £1 (3), postage dues, Machins, etc. (232) **£200-£250**
- 542 - A K.G.VI to Q.E.II selection, incl. Wildings, Machins to £10, multiples, etc. (100s) **£100-£120**
- 543 - A Q.E.II Wilding accumulation, incl. many blocks, part sheets, values to 1s.3d. (190), etc. (many 100s) **£100-£120**
- 544 **Prince of Wales Hospital Fund**, 1897, an accumulation, incl. 1s. and 2s.6d. overprinted "SPECIMEN" and perfin part "CANCELLED", two 1s. to 10s. sets mint, 'Subscription book and stamp album' containing set of four, 1s. and 2s.6d. much duplicated with multiples, etc. (few 100s) **£150-£200**
- 545 - Year overprints, comprising 1898 1s. with 1900, 1901, 1902, 1905, 1906, 1909, 1910, 1916, 1897 2s.6d. with 1919 (twice) forgery, 1898 2s.6d. with 1910 and 5s. with 1908, 1910, fair to fine. Photo. **£250-£300**

523

**J. & J. COLMAN, LIMITED,**  
 having received many requests for specimens of the various Advertisements, have had reproductions made of the Posters, &c., advertising their well-known  
**Mustard, Starch, Blue, Cornflour & Self-Rising Flour**  
 which they hope will be acceptable to Stamp and Advertisement Collectors.

**J. & J. COLMAN, LIMITED,**  
 having received many requests for specimens of their various Advertisements, have had reproductions made of the Posters, &c., advertising their well-known  
**MUSTARD, STARCH, CORNFLOUR, BLUE, AND SELF-RISING FLOUR,**  
 which they hope will be acceptable to Stamp and Advertisement Collectors.

108, CANNON STREET, LONDON,  
 and  
 CARROW WORKS, NORWICH. Ex 525

THE TOTAL PROCEEDS FROM THE SALE OF THESE STAMPS WILL BE GIVEN DIRECT TO THE  
**MARGATE COTTAGE HOSPITAL EXTENSION FUND**  
**14259**  
*Albert Lion*

THE TOTAL PROCEEDS FROM THE SALE OF THESE STAMPS WILL BE GIVEN DIRECT TO THE  
**MARGATE COTTAGE HOSPITAL EXTENSION FUND**  
**282**  
*Albert Lion, Adult, President*

THE TOTAL PROCEEDS FROM THE SALE OF THESE STAMPS WILL BE GIVEN DIRECT TO THE  
**MARGATE COTTAGE HOSPITAL EXTENSION FUND**  
**101**  
*Albert Lion, Adult, President*

PRICE TEN SHILLINGS PER SHEET OF 16 STAMPS.

536

537

## Cinderellas continued




556




540

- 546 **Printers Souvenirs**, a selection in a stockbook and loose, incl. Bradbury Wilkinson, Harrison, De La Rue, printers samples, specimen cards, etc. (few 100s) **£100-£150**
- 547 **Queen's Highcliffe Hotel** labels, perforated sheet of 25 in violet and imperforate strip of five in red. **£80-£100**
- 548 ★ **Saint Bartholomew Hospital Reconstruction Fund**, 1930 1d. complete sheet of 24 in maroon, one with ink mark, also 1939 two part sheets. **£150-£200**
- 549 **Saving Stamps**, an accumulation, incl. Q.V. 1s. forms (2) with stamps, 'Swastika' 6d. unused and cancelled, Specimens, etc. (100s) **£300-£400**
- 550 - An accumulation of books, documents and ephemera, 1912 1s. (2) used, 1916 'Swastika' 6d. mint, 1918 6d. block of four overprinted "SPECIMEN", etc. (few 100s) **£250-£300**
- 551 - An accumulation incl. ten books containing 'Swastika' stamps, fifteen books of K.G.V, range of later with ephemera, etc. (few 100s) **£400-£600**
- 552 **Shakespeare**, 1864-65 'Penny Memorial' label, seven with slightly different sizes and perms., mixed condition. **£100-£150**
- 553 - A selection from 1900 to recent, incl. covers and ephemera, with Chris Harman, FRPSL, article disproving 1900 (c.) 23 poster stamps, three cancelled on pieces and four on postcards. **£100-£150**
- 554 - A selection from 1900 to recent, incl. covers and ephemera, with Chris Harman FRPSL article disproving the false theory of single colour each year, etc. **£80-£100**
- 555 - 1921 from the Higlett booklet *Shakespeare as a Stamp Collector* (136 printed) with four perforated Tudor 1d's from the Shakespeare collection showing Tudor monarchs, also a letter written by Fred Melville to "Myster Hyglette". **£80-£100**
- 556 B **Spitfire Fund** Word War II booklet complete, containing 25 1s. stamps, fine and scarce. Photo. **£100-£150**
- 557 **Stamp Dealers and Printers**, a small selection incl. Harrison & Sons (17), Hamilton Smith & Co., etc. (32) **£400-£500**
- 558 - Errington & Martin, a research collection, heavily duplicated, incl. some price lists, advertising cards, range of stamps with their handstamp on reverse, etc. (100s) **£150-£200**
- 559 **Strike Mail 1971**, A large accumulation in an album and loose, contained in two cartons, incl. a large range of covers and stamps, much duplication, etc. (1,000s) **£300-£350**
- 560 - An accumulation in an album, leaves and loose, incl. range of labels, multiples and a large range of covers, etc. (100s) **£250-£300**
- 561 **Various**, an accumulation in a folder and loose, incl. labels, revenues on documents, W.W.I, ephemera, etc. (100s) **£250-£300**



**College Stamps**

- 562 A selection, incl. Hertford and Keble Colleges, Oxford, Queens and St. John's Colleges, Cambridge, some postal stationery, mixed condition, etc. (100s) **£250-£300**
- 563 A small selection, incl. Exeter College, Oxford 1882 (½d.) salmon-red in a mint block of four, Lincoln College, Oxford 1d. unused and used (crayon cross), Merton College, Oxford, etc. (38) **£200-£250**
- 564 ★  **Exeter College, Oxford:** 1882 (½d.) salmon-red in a complete sheet (12 x 8), some slight staining and creasing, otherwise fine and scarce. S.G. CS3. Photo on page 71. **£350-£400**
- 565 **Hertford College, Oxford:** 1879 (½d.) bright mauve, four complete sheets (5 x 7, two perf. and two imperf.), mint block of twenty-five, block of four and four singles, fair to fine. S.G. CS4. **£300-£350**
- 566 **Keble College, Oxford:** 1876 (½d.) ultramarine unused (2), 1882 (½d.) two sheets (6 x 8, one mint, other unused and stained), plus two blocks of four, pair and single, unused, varied condition. **£200-£250**
- 567 ☆ **St. John's College, Oxford:** 1884 (½d.) grey-blue, selection with four sheets of 48 (two without gum) and 474 unused examples, mainly in blocks, varied condition. (666) **£400-£500**

**Newspaper Tax Stamps**

- 568 A selection of cut-outs from 1756 to 1878 with a range of types, etc. (110 items) **£80-£100**
- 569  1854-65 printed Prices Current from "Powell & Sings" (2) and "Price Current of Leather" (3), good to fine. **£100-£120**

**Railway Stamps**

- 570 An accumulation, incl. North Eastern Railway, North British, Midland, Great Eastern, many Parcel stamps, some light railway and bus stamps, much duplication, etc. (many 100s) **£500-£600**
- 571 A collection of parcel stamps on leaves, incl. Great Western Railway Newspaper parcel with multi value sheet on nine, Midland & Great Western, Caledonia, duplication, etc. (few 100s) **£250-£300**
- 572 A selection on stockleaves, incl. Furness, Barry, Rhonda, North Eastern Railway newspaper and parcel stamps, some duplication, etc. (few 100s) **£200-£250**
- 573 An accumulation in a stockbook, incl. good range of railway companies, much duplication, etc. (100s) **£200-£250**
- 574 An accumulation of parcel stamps, incl. Great Western Railways, L.N.E.R., Southern Railway, range of cancellations, etc. (100s) **£150-£200**
- 575 A selection of railway and parcel stamps on covers, incl. London & Midland, L.N.E.R., British Rail, Midland 'Red' (20 items) **£150-£200**
- 576 A selection of letter stamps in a stockbook, incl. English, Irish and Scottish, unused and used, etc. (60) **£100-£120**
- 577  Selection of ten covers and two fronts from 1897 to 1927, comprising G.W.R. Express, Holmwood, Metropolitan, Caledonia 4d. (front), Midland, Southern 4d., Sheffield, Great Central & Midland 4d. (2 different), Hull & Barnsley 4d., G.W.R. 2d. (front), and N.E.R. 2d. used in Bradbury, poor to fine. Photo on page 60. **£200-£250**
- 578 ★  **Midland & South Western Junction Railway,** 1d. Newspaper Parcel stamp in a complete mint sheet (6 x 4), a few perf. separations, one damaged, scarce. **£100-£120**
- 579 **Scotland,** a collection of newspaper stamps on leaves, incl. Caledonian Railway, Glasgow & South Western Railway, Highland Railway, North British Railway, Way Bills, etc. (57) **£200-£250**

**Postal Stationery**


- 580 ☒ A Q.V. to Q.E.II selection of Specimen or School Specimen overprints, comprising Q.V. 1d. pink envelopes (4), 2d., 1d. + 1½d. + 3d. s.t.o., 1859 notice (soiled), K.G.VI 2d. postcard and 3d. envelope, Q.E.II 2½d., 3d. envelopes, 2½d. postcard, 2½d. and 4d. letter card, fair to fine. (16) **£80-£100**
- 581 ☒ An accumulation, incl. Official mail, 1890 Penny Postage Jubilee items, also a range of wrapper bands, etc. (100s) **£160-£160**
- 582 ☒ **Air Letter Sheets:** A K.G.VI to Q.E.II an unused and used accumulation in seven folders and loose, incl. some f.d.c's, s.t.o. sheets, Press Specimens and cancelled, much duplication, etc. (many 100s) **£150-£200**
- 583 ☒ - 1966 9d APS11 with green, blue and yellow omitted, 1972 5p. APS21 with blue omitted, with normals for comparison. **£80-£100**
- 584 ☒ **Envelopes:** An unused and used accumulation, incl. much duplication, etc. (100s) **£200-£250**
- 585 ☒ **Forces:** A selection, incl. registered envelopes, postcards, airgraphs, some duplication, etc. (139 items) **£100-£120**
- 586 ☒ **Letter Cards:** A Q.V. to Q.E.II comprehensive collection, covering LCP1 to LCP49, unused and used, much duplication, etc. (100s) **£180-£200**
- 587 ☒ **Postcards:** A Q.V. to Q.E.II accumulation, unused and used, incl. much duplication, etc. (100s) **£150-£200**
- 588 ☒ **Registered Envelopes:** A Q.V. to Q.E.II accumulation, incl. K.G.V compound items, much duplication, etc. (100s) **£250-£300**
- 589 ☒ - K.G.V 1921 3d. brown + 2d. orange size G, RG36G, flap type 7, fine unused. **£70-£90**
- 590 ☒ - K.G.VI 5½d. brown RP66F, overprinted "B.M.A./SOMALIA/40/CENTS", fine unused. **£70-£80**
- 591 ☒ - An accumulation of mainly 1940s and 1950s, most being 5½d., 6½d. and 8½d. envelopes, addressed to Aberdeen Confectionery Co., etc. (100s) **£80-£100**
- 592 ☒ **Stamped to Order:** An accumulation unused and used, incl. envelopes, compound frankings, wrappers, duplication, etc. (100s) **£200-£250**
- 593 ☒ - An accumulation of envelopes and wrappers, unused and used, incl. compound stampings, duplication, etc. (100s) **£150-£200**
- 594 ☒ - Stamford Mercury, 1904-1972 s.t.o. wrappers, comprising K.E.VII ½d. WS11, Q.E.II 6d. WS114, ½d. blue + 4d. error of colour WS131 (8), WS132, WS133, WS139 (3), fair to fine. **£100-£120**
- 595 ☒ **Wembley Exhibitions 1924-25:** 1924 1½d. envelope (6), 1d. postcard (25), 1½d. postcard, 1½d. letter card (4), 1925 1½d. envelope, 1d. postcard (15), 1½d. letter card, mainly unused, good to fine. **£140-£160**
- 596 ☒ - 1½d. envelope EP66, EP67 unused and used, 1d. postcard CP85, CP87 unused and used, 1½d. postcard CP86 used, CP88 unused, 1½d. letter card LCP10 unused and used, LCP11 unused and used, good to fine. **£150-£180**
- 597 ☒ - 1d. and 1½d. cards CP86, CP86, 1½d. letter card LCP10, all used on the first day Apr. 23 1924. **£100-£120**
- 598 ☒ - Complete set comprising EP66, EP67, CP85, CP86-CP88, LCP10, LCP11, unused. **£70-£90**

**Postal Stationery – Telegraph Forms**

- 599 A selection of forms in two folders, leaves and loose, incl. Cable & Wireless, Eastern Telegraph Co. Ltd., 1924 (Apr. 23) special form used on the first day of the Wembley Exhibition, Marconi, Post Office Cable & Wireless, Railway Telegraph forms, Reuters, The Electric Telegraph Co., and a range of later Greetings, duplication, etc. (100s) **£400-£500**
- 600 A selection of unused forms, incl. 1915 K.G.V 6d. (2), 1915 9d., 1915 9d. (5), 1920 1s. (2), 1940 K.G.VI 9d. (2), 1951 1s.6d. (2), etc. (36 items) **£300-£350**

**AL<sup>S</sup>E POST OFFICE TELEGRAPHS.**  
 Form for Inland Telegrams forwarded from Stock Exchange Offices only.

Prefix Code } Time }	WORDS.	CHARGES.	
		s.	d.
Sent at	Text	Telegram	.....
To	Inst <sup>ns</sup>	Reply	.....
By	Total	Extra } Copies } Portage }	.....
		Total	.....




636

From  
**WILLIAM GODFREY**


623

**AL<sup>S</sup>E POST OFFICE TELEGRAPHS.**  
 Form for Inland Telegrams forwarded from Stock Exchange Offices only.


Prefix Code } Time }	WORDS.	CHARGES.	
		s.	d.
Sent at	Text	Telegram	.....
To	Inst <sup>ns</sup>	Reply	.....
By	Total	Extra } Copies } Portage }	.....
		Total	.....

The Name and Address of the Sender, or either of them, if to be telegraphed, must be written at the End of the Message: if not to be telegraphed, they should be written in the space provided at the Back of the Form.

12 words  
**6<sup>d</sup>.** TO {



POST OFFICE  
**INLAND TELEGRAM**



Chargeable Words \_\_\_\_\_ Counter Number \_\_\_\_\_  
 Charge \_\_\_\_\_  
 As \_\_\_\_\_  
 To \_\_\_\_\_  
 By \_\_\_\_\_

Prefix \_\_\_\_\_ Headed in \_\_\_\_\_ SERVICE INSTRUCTIONS \_\_\_\_\_ Actual Words \_\_\_\_\_

BLOCK LETTERS THROUGHOUT PLEASE

If you wish to pay for a reply insert R.P. here ADDRESS \_\_\_\_\_

621

627



640

639



Ex 577



641



638

**Postal Stationery – Foreign & Colonial Telegraph Forms**

- 601** Q.V. 1880 10d. pale blue TP55, 1892 10d. brown TP57, 1895 10d. brown (2) TP58, also K.E.VII 10d. brown TP59b, good to fine. **£120-£150**
- 602** - Q.V. 1889-1910 10d. blue TP55, TP56a, TP56b, 10d. brown TP57, TP58ac, TP61bb, K.E.VII 10d. brown (2 one overprinted "SPECIMEN"), TP59aa, TP59c, good to fine. (8) **£300-£350**
- 603** - Q.V. 1890-1910 10d. blue TP56d, 10d. brown TP57 (2), K.E.VII 10d. brown TP59c, fair to fine. (4) **£100-£120**

**Postal Stationery – Inland Telegraph Forms**

- 604** 1870-85 Q.V. 1s. green octagonal dies dated 25.10.69, 22.11.69 (overprinted "SPECIMEN"), 21.4.74, 1.11.71, (TP1/2, TP3 (2), TP4c, TP9b), also Telegraph cards dated 26.1.72 and two unstamped cards, fair to fine. (12 items) **£80-£100**
- 605** 1872 1s. green cards dated 24.1.72, 8.2.72, 13.2.72, 15.2.72 (overprinted "SPECIMEN"), good to fine. (9) **£80-£100**
- 606** A Q.V. to K.G.VI selection, incl. 1875-77 1s. with Truscott imprint (2), 1902 6d. with McCorquodale imprint (4), 1915 6d., 1915 9d. (2), 1920 1s. olive-brown (2), 1940 6d. purple, 1944 1s. brown, etc., fair to fine. (26 items) **£200-£250**
- 607** Q.V. 1875-80 1s. green octagonal dies dated 6.9.75 (cut-out), 8.12.75, 25.4.76, 29.6.78, 9.6.80, 20.8.80, 12.11.80 (TP6bb (2), TP7aa (2), TP7ba, TP7bc (2), fair to fine. **£80-£100**
- 608** Q.V. 6d. purple, selection of TP9, 10, 11 and 12, mostly different, fair to fine. (19) **£80-£100**
- 609** Q.V. 6d. purple date plugs replaced by 5 or 9 florets, TP14a (foxed) and TP14b. **£100-£120**
- 610** Q.V. 6d. purple undated dies with TP15aa (2), 16aa (2), 16ad, 15ab (11), 16bb (13), 16ac, good range of dies and imprints, also two part booklets TP15ab and 16bb, fair to fine. (30) **£100-£120**
- 611** s K.E.VII 6d. purple and 10d. brown, two of each overprinted "SPECIMEN", fair to fine. **£80-£100**
- 612** K.E.VII 6d. purple selection of TP17 and TP18 with a range of print formats and imprints, also TP17a and TP59aa overprinted "SPECIMEN" good to fine. (15) **£100-£120**
- 613** K.G.V 6d. purple TP19 (2, one with 3d. adhesive added), TP25, 9d. brown imprint Wy & S 5/16, G & S 11/17. TP21ca, WB & L 3/20 TP21cb, also faulty single form TP20c. with c.d.s. (6) **£150-£200**
- 614** 1920 9d. brown + 3d. violet TP22b imprint D.St. 11/19 uprated form also booklet cover. **£100-£120**
- 615** 1920 9d. brown + 3d. violet uprated form TP22b, imprint G & S 11/17. **£80-£100**
- 616** 1920 1s. olive-brown form in a complete booklet of twenty, a few cover faults, otherwise fine. **£350-£400**
- 617** 1920-27 1s. olive-brown range of imprints G & S 11/17 TP23a, D. ST. 11/19 TP23, WB & L 3/20 TP24c, McC & Co 6/24 TP24f, 11952 TP24m, fair to fine. (5) **£100-£120**
- 618** 1927 1s. olive-brown (sold in booklets) with imprints (12658) 11952, 100m., good to fine. **£80-£100**
- 619** K.G.VI 1941-48 9d. olive-green TP27 imprint (30700) 3378, 1s. brown TP28c imprint 8/48 Hw, fine. **£80-£100**
- 620** K.G.VI 1944-50 1s. brown TP28a, TP28b and TP28c, fine. **£100-£120**
- 621** K.G.VI 1951 9d. + 9d. TP30 uprated form, fine and rare. Photo. **£350-£400**
- 622** K.G.VI 1951 1s.6d. violet-blue with Tudor Crown TP31a, and St. Edward's Crown (2, no imprint), fine. (3) **£150-£200**

### Postal Stationery – Stock Exchange Forms


- 623 Q.V. 1881 1s. green dated 4.8.81 Harrison imprint TP35c, very fine and rare. Photo on page 60. **£100-£120**
- 624 Q.V. 1882-83 1s. green dated 28.11.82 Harrison imprint TP38a. (2) **£80-£100**
- 625 Q.V. 6d. purple dated 24.2.87 and 23.1.92, Eyre & Spottiswoode and Harrison imprints, undated Wyman imprint TP42bb, TP42cb, K.E.VII 6d. purple TP44bb. (5) **£100-£120**
- 626 Q.V. 6d. purple undated TP42bb, TP42bb, K.E.VII 6d. purple TP44bb, fine. (3) **£80-£100**
- 627 Q.V. 1894 6d. purple, date plugs replaced by 9 dot florets, Eyre & Spottiswoode imprint, fine and rare. Photo on page 60. **£350-£400**
- 628 K.G.V 1915-27 9d. brown 12/13 Wy & S imprint TP46, 1s. olive-brown 10/27 McC & Co. imprint and 9d. + 3d. provisional form 3/15 Wy & S imprint, fair to fine. (3) **£120-£150**
- 629 K.G.V 1915 9d. brown + 3d. violet uprated provisional form with 3/15 Wy & S Ltd. imprint, central fold, otherwise fine. **£80-£100**
- 630 K.G.V 1919-27 1s. olive-brown with 12/19 S.O.F.Rd imprint (central fold) TP48a and 10/27 McC & Co. Ltd. imprint TP49c, fine. **£80-£100**

### Cancellations

- 631 ○ A selection of mainly Q.V. to K.G.VI in an album and on leaves, incl. a good range of slogans, Exhibitions, etc. (100s) **£150-£200**
- 632 ○ **Railway Stations:** A selection on mainly Q.V. surface printed issues, comprising railway numeral cancellations with Scottish rectangles, “15”, “30”, “127”, “157”, “199”, “201”, “239”, “270”, English circles “72”, “80”, “93”, “152”, “260”, “298”, “321”, “486A”, “499”, “511”, “556A”, “570”, “572”, “583”, “589”, “668”, “682”, “793”, “803”, “811”, “814”, “826”, “839”, “855”, “878”, “906”, “915”, “1012”, “1016”, “1070”, “1080”, “1081”, “1082”, “1119”, “1187”, “1196”, “1226A”, “123?”, “1240”, “1306”, “1330”, “1352”, “1362”, “1438”, “1469” and “1567”. On 3d. rose plates 7 and 8, 6d. mauve plate 9 (3), 6d. grey plate 18, 6d. on 6d. (2), 6d. Jubilee, 1s. green plate 5 (7), plate 6 (15), plate 11 and plate 12, 1s. orange-brown plate 13 (3), plate 14 (11), 11s. dull green, 1s. Jubilee dull green (6), 1d. red (2), 1867-78 5s. with “BIRMINGHAM TELEGRAPH OFFICE/FE 23/72”, 1s. green plate 6 with “SOUTHAMPTON HEAD TELEGRAPH OFFICE/SP 28/72” c.d.s., mixed condition. (58) **£300-£400**
- 633 ○ - A selection on Q.V. surface printed issues, comprising railway numeral cancellations with English numerals in circles “80”, “152”, “511”, “570”, “682”, “793”, “803”, “839”, “855”, “1070”, “1082”, “1196”, “1240”, “1438” and “1469”, also some Scottish rectangles with partial strikes, mixed condition. (28) **£100-£120**
- 634 **Slogans:** A K.G.V to Q.E.II vast accumulation of covers, cards and many, many pieces, contained in ten cartons, incl. postal stationery, Official mail, machine cancellations, unbelievable range of types, much duplication, etc. (many 1,000s) *The buyer of this lot is responsible for its removal from our offices.* **£100-£200**

### Queen Victoria Issues

- 635 **1840 Mulready and Caricatures and other Printed Envelopes:** A selection of covers, cards, fronts, incl. range of caricatures, Deraedemaker, facsimiles, forgeries, modern reproductions, etc., mixed condition. (169 items) **£500-£600**
- 636 P **Local Stamp Essays:** An engraved essay for a “LOCAL POSTAGE STAMP”, in red on white wove paper, fine. *It is believed that these were produced in around 1861 by Bradbury, Wilkinson.* Photo on page 60. **£100-£120**
- 637 ○ **1847–54 Embossed** 1s. green (79), 10d. (10) and 6d. (36), used, most cut to shape, very mixed condition. (125) **£500-£600**
- 638 田 S **1867-80 watermark spray** 3d. deep rose plate 5 IE-JF imperforate marginal block of four from the foot of the sheet overprinted “SPECIMEN” type 8, top pair have two small oil spots, otherwise fine, lower pair is unmounted. S.G. 102s, S.G. Spec. J30t, cat. £900. Photo on page 60. **£200-£250**

- 639  S 1880–81 'Provisional Issue' 2d. pale rose, in an irregular block of twelve, overprinted "SPECIMEN" type 9, two are creased, six are unmounted. S.G. 168s, cat. £1,320. Photo on page 60. **£250-£300**
- 640 S 1883–84 watermark anchor on blued paper 10s. ultramarine AE overprinted "SPECIMEN" type 9, with part original gum, small imperfections, otherwise fine. S.G. 177 (S89), Spec. K13(1)s, cat. £2,800. Photo on page 60. **£300-£350**
- 641 P 1883-84 'lilac and green' 2½d. AH green on buff colour trial, perf. 14 on unwatermarked paper, minor gum creases, otherwise fine with large part original gum. B.P.A. certificate (1968). Photo on page 60. **£250-£300**
- 642 S 1887–92 'Jubilee' ½d. vermilion (2), 1½d. (4), 2d. (2), 2½d. (3), 3d. (3), 4d. (2), 5d. die II (2), 6d. (3), 9d. (2), 10d. and 1s. dull green (3), all overprinted "SPECIMEN" mainly type 9, varied condition. (27) **£350-£400**

## Officials



646




647



648



649

- 643 A mint and used accumulation on stockleaves, incl. Inland Revenue 1892 £1 green IB used (repaired corner), 1902 1s. used, O.W. Official 1896-1902 5d. used, Army Official 1902-3 6d. mint irregular block of seven, Government Parcels 1883-86 6d. dull green used on part parcel label with 1½d., 1890 1s. dull green used (20), 1900 1s. used. (12), Admiralty Official, forgeries, much duplication, etc. (100s) **£3,500-£4,000**
- 644 O A much duplicated used selection in a stockbook and loose, incl. Inland Revenue 1902-04 1d. used on covers (7), a range of forgeries, etc. (100s) **£150-£200**
- 645 **Board of Trade:** 1881 to 1910 selection with "(crown)/B.T" perfins, incl. Q.V. to K.E.VII issues, some on pieces, not guaranteed, etc., mixed condition. (158) **£250-£300**
- 646 S **Inland Revenue:** 1885 watermark anchor on blued paper 5s. rose CE, overprinted "SPECIMEN" type 11 without gum, otherwise fine. B.P.A. certificate (1963). Photo. **£250-£300**
- 647 S - 1890 10s. ultramarine CC on white paper overprinted "SPECIMEN" type 11, fine and fresh with gum. S.G. Spec. O10s, cat. £2,500. Photo. **£700-£800**
- 648  **Office of Works:** 1896-1902 ½d. pair used on printed O.H.M.S business cover locally used in Westminster, fine and scarce. S.G. O31. Photo also on inside back cover. **£250-£300**
- 649 S - 1896-1902 1d. lilac overprinted "SPECIMEN" type 16 in a horizontal strip of three from the left of the sheet, fine and fresh with full gum (unmounted). S.G. Spec. O33s, cat. £975+. Photo. **£400-£500**



651



656

### King Edward VII Issues

- 650 1902 to 1913, a mint and used selection of high values, incl. 2s.6d. (5), 5s. (5) and 10s. mint, used (3), £1 used, very mixed condition. (54) £700-£900
- 651 B 1909 (Aug.) 2s.0d. booklet complete, edition 5 (3rd. interleaf advert Chas. Baker & Co.), all panes with upright watermarks, usual mixed perfs., slightly rubbed covers otherwise fine and fresh. S.G. BA5, cat. £2,600. Photo. £800-£1,000

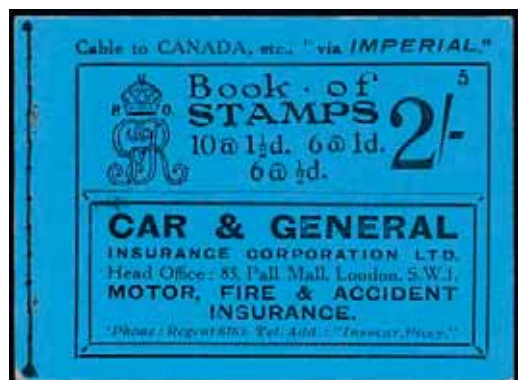
### King George V Issues

- 652 An accumulation of controls in five stockbooks and loose, incl. 1912-24 watermark Royal Cypher with values to 9d. olive-green (5), 1s. bistre (28), 1924-26 watermark Block Cypher values, shades, also some Postage Dues, etc., varied condition. (many 100s) £700-£800
- 653 C 1918 Bradbury 2s.6d., the 1921 experimental printing on simple cypher (sideways and reversed) watermarked paper, overprinted "CANCELLED" type 24, from the left of the sheet, a few blunted perfs. at base, otherwise fine with gum. S.G. Spec. N65 var, cat. £650. Photo. £140-£160
- 654 C 1924 Wembley 1d. and 1½d. both overprinted "CANCELLED" type 28, fine with gum. S.G. Spec. NCom1v, 2v. Photo. £400-£500
- 655 1925 Wembley 1d. affixed to Exhibition souvenir telegram, tied by the "P.O. EXHIBIT. GOVT. PAVILION/WEMBLEY/16 JUL/1925" handstamp, some minor staining, otherwise fine. £100-£120

### King George V – Booklets and Booklet Panes



657



658

- 656 ★ 1912-24 watermark Royal cypher 1½d. advertising pane with watermark inverted, fine mint. S.G. Spec. NB9a. Photo. £200-£250
- 657 B 1924 (Mar.) 2s. booklet edition number 22, ½d. pane and 1½d. panes with inverted watermarks, some trimmed perfs., otherwise fine. S.G. BB12, cat. £875. Photo. £350-£400
- 658 B - 2s. booklet edition number 5, ½d. pane and 1½d. panes with inverted watermarks, some trimmed perfs., otherwise very fine and fresh. S.G. BB12, cat. £875. Photo. £350-£400



653



Ex 654



659



Ex 663

- 659 ★ C 1924-26 watermark block cypher 1½d. advertising pane overprinted “CANCELLED” type 28 with upright watermark, trimmed perfs. at top and right, otherwise fine. S.G. NB15v, cat. £700. Photo. £120-£150
- 660 ★ - 1½d. advertising panes, an accumulation of panes of four and part panes of two, all without selvedge in a stockbook, incl. G.P.O. adverts complete, ‘Knight’s Castile/Knight’s Castle’ with picture, inverted watermark, good range of other issues, etc. (100s) £1,000-£1,200
- 661 ★ - 1½d. advertising panes, two, one with watermark inverted, 1934-36 Photogravure 1½d. advertising panes, intermediate format two panes, one with inverted watermark, small format panes (4), 1937 K.G.VI advertising panes (5), and 1936 K.E.VIII 1½d. advertising pane, mainly fine mint. £500-£650
- 662 ★ - 1½d. advertising panes, six, two with watermarks inverted, good to fine. £300-£350
- 663 ★ - 1½d. advertising panes, four, three with inverted watermarks, fine mint. S.G. Spec. NB15, a. Photo. £200-£250



664



665

- 664 ☉ - 1½d. booklet pane of four (the two stamps at right removed) with two printed labels showing “INDIA-RUBBER INLAID SPONGE/R.G. McKINLAY” adverts printed in green, fine unmounted mint. S.G. Spec. NB15(72) Photo. £300-£350
- 665 C 1934-36 photogravure 1½d. advertising panes, small format, pane with upright watermark and G28 no dot, and overprinted “CANCELLED” type 33, trimmed perfs. and top, otherwise fine. S.G. Spec. NB26b, cat. £900. Photo. £200-£250



Ex 666



Ex 667

- 666 ★ - 1½d. advertising panes, intermediate format two panes, both with upright watermark, fine mint. S.G. Spec. NB25. Photo. **£350-£400**
- 667 ★ - 1½d. advertising panes, small format two panes (6), one with inverted watermark, with cylinders G28 no dot and G28 with dot (5), fine mint. Photo. **£280-£300**
- 668 ★ - 1½d. advertising panes, small format, four panes, three with inverted watermarks, fine mint. S.G. Spec. NB27, a. **£200-£250**
- 669 ★ - 1½d. advertising panes, small format with cylinder numbers, with G 26 with dot (2), G28 no dot (2), fair to fine. **£180-£200**



Ex 670



Ex 672

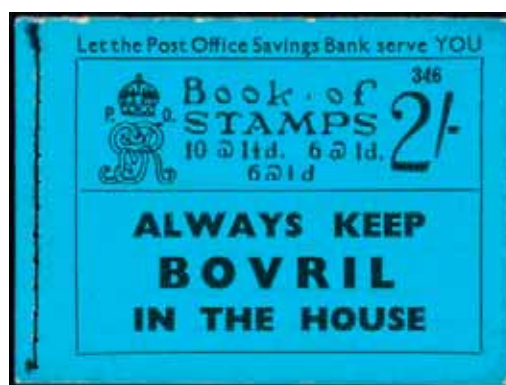
- 670 ★ - 1½d. advertising panes, small format, three panes, one with inverted watermark and G28 no dot, fine mint. S.G. Spec. NB27, a. Photo. **£150-£200**
- 671 ★ - 1½d. advertising panes, small format, two panes, with upright watermarks, one with G28 dot, fine mint. S.G. Spec. NB27. **£150-£200**
- 672 B 1935 (Jan.) 2s. booklet edition number 262, all panes with upright watermarks, good perms., fine and fresh. S.G. BB14, cat. £1,050. Photo. **£450-£500**
- 673 B - 2s. booklet edition number 276, all panes with upright watermarks, some trimmed perms., otherwise fine and fresh. S.G. BB14, cat. £1050. Photo. **£400-£450**
- 674 B 1935 (July) photogravure 2s. booklet edition no. 346, ½d. pane and one 1½d. pane with inverted watermarks, some trimmed perms., minor cover imperfections, otherwise fine. S.G. BB17, cat. £575. Photo. **£140-£160**

### King Edward VIII – Booklets and Booklet Panes

- 675 B **Booklets:** 1936 2s. booklet editions 355, 356 (2), 357, 358, 359. 360 (2), 370, 371, 372, 373 (2), 374. 384 and 385, fair to fine. S.G. BC2, cat. £2,240. **£500-£600**
- 676 B - 1936 2s. booklet editions 354, 355 (2), 356 (2), 359 (3), 360 (2), 363, 364, 371, 373, 378, 382, varied condition. S.G. BC2, cat. £2,240. **£500-£600**



673



674

- 677 - 1937 5s. booklet edition 16 ½d. pane and 5 1½d. panes with inverted watermark, edition no. 17 ½d. pane and 1½d. five panes with inverted watermarks, mixed perfs. S.G. BC4, cat. £550. Photo. **£180-£200**
- 678 ★ **Booklet Panes:** 1936 1½d. red-brown advert booklet panes, twelve panes, four with G7 cylinder numbers, five with inverted watermarks, fair to fine. S.G. PB5, a. **£250-£300**
- 679 ★ - 1936 1½d. red-brown advert booklet panes, five panes, four with inverted watermarks, fair to fine. S.G. PB5, a. **£120-£150**
- 680 ★ - 1936 1½d. red-brown advert booklet panes, three with upright watermarks, one with G7 with dot, fine mint. S.G. PB5, a. **£100-£120**



677



685

### King George VI Issues

- 681 A selection of controls in two stockbooks, incl. many singles, strips of three, blocks of six with 1937-47 3d. (6), 5d. (3), 6d. (5), 7d. (3), 8d., 9d. (3), 10d. (2), much duplication, etc. (100s) **£300-£400**
- 682 **Booklet Panes:** 1937-47 1½d. red-brown advert booklet panes, fourteen panes, all with upright watermarks and with cylinder numbers, fair to fine. **£450-£500**
- 683 ★ - 1½d. red-brown advert booklet panes, eleven panes, one with inverted watermark and all with cylinder numbers, fair to fine. **£350-£400**
- 684 ★ - 1½d. red-brown advert booklet panes, three panes, with inverted watermarks, fair to fine. **£150-£200**
- 685 B **Booklets:** 1938 (Mar.) 2s. booklet edition 505, all panes with inverted watermarks, mixed perfs., fine. S.G. BD12, cat. £1,050. Photo. **£300-£350**



697



Ex 687



Ex 688



Ex 689



Ex 694



Ex 686



Ex 693



Ex 690



Ex 695



Ex 692



Ex 691

### King George VI Issues – Propaganda Forgeries

- 686 F A selection on leaves, incl. 1937-47 set (2) 'unused' and 'used' on special 'G.P.O.' sheets, "LIQUIDATION/OF EMPIRE" overprints with Saint Lucia and Singapore unused on special 'G.P.O.' sheets, Rangoon set 'used', Rabaul set 'used', etc. (52) Photo. **£600-£700**
- 687 F A selection on leaves, incl. 1937 definitive set 'unused' and 'used' (2), 1937 Coronation 1½d. 'unused' and 'used', some genuine for comparison, etc. (35) Photo. **£100-£120**
- 688 F ½d. to 3d. 'unused' and 'used' sets with framed "LIQUIDATION/OF EMPIRE/BAHAMAS" overprint, mostly fine. (12) Michel IV9f-14f. Photo. **£280-£300**
- 689 F ½d. to 3d. 'unused' (less 3d.) and 'used' sets with framed "LIQUIDATION/OF EMPIRE/BARBADOS" overprint, mostly fine. (11) Michel IV9c-14c. Photo. **£200-£250**
- 690 F ½d. to 3d. 'unused' and 'used' (less 2½d.) sets with framed "LIQUIDATION/OF EMPIRE/BERMUDA-IS" overprint, mostly fine. (11) Michel IV9g-14g. Photo. **£200-£250**
- 691 F ½d., 1d., 1½d. and 3d. 'unused', ½d. to 3d. set 'used' with framed "LIQUIDATION/OF EMPIRE/HONG KONG" overprint, mostly fine. (10) Michel IV9h-14h. Photo. **£200-£250**
- 692 F ½d. to 3d. 'unused' and 'used' sets with framed "LIQUIDATION/OF EMPIRE/JAMAICA" overprint, mostly fine. (12) Michel IV9d-14d. Photo. **£250-£300**
- 693 F ½d. to 3d. 'unused' and 'used' (less 2½d.) sets with framed "LIQUIDATION/OF EMPIRE/Sta LUCIA" overprint, mostly fine. (11) Michel IV9a-14a. Photo. **£200-£250**
- 694 F ½d. to 3d. 'unused' and 'used' (less 1½d.) sets with framed "LIQUIDATION/OF EMPIRE/Sta LUCIA" overprint, mostly fine. (11) Michel IV9b-14b. Photo. **£200-£250**
- 695 F ½d. to 3d. 'unused' and 'used' sets with framed "LIQUIDATION/OF EMPIRE/TRINIDAD" overprint, mostly fine. Michel IV9e-14e. Photo. **£280-£300**



- 696 F ½d. interpanneau block of nine overprinted "WORLD JUDAISM" (3), "THE BLUFF CHARTER" (2), "EMPIRE'S LIQUIDATION", "WORLD CAPITALISM" (2) or "WORLD BOLSHEVISM". *Very rare, only 30 of each now exist.* Michel II 9a, b, c, d, e, f. Photo also on inside back cover. **£1,000-£1,200**

**King George VI Issues: Propaganda Forgeries** continued

- 697 F 3d. interpanneau block of nine overprinted "WORLD JUDAISM" (2), "THE BLUFF CHARTER" (3), "EMPIRE'S LIQUIDATION" (2), "WORLD CAPITALISM" or "WORLD BOLSHEVISM". *Very rare, only 30 of each now exist.*  
Michel II 14 a, b, c, d, e, f. Photo on page 68. **£1,000-£1,200**

**Queen Elizabeth III Issues**

- 698 ★ **Wilding Booklet Panes:** 1952-54 watermark Tudor Crown 1d. 'Minimum Inland' se-tenant panes, watermark upright (unmounted), watermark inverted (mounted), fine. **£100-£120**

**Off-Shore Islands**

- 699 A selection in three stockbooks, incl. Calf of Man, Herm Island,, Sark, etc., duplication, etc. (100s) **£150-£200**
- 700 **Lundy:** An accumulation, incl. 1909 p.p.c. with Lundy c.d.s., later issues in sheets, covers, etc. (many 100s)  
**£300-£400**
- 701 - A heavily duplicated accumulation in a stockbook, incl. 1935 (Apr.) 'Tram' tickets ½d. (5), 3d. (3), 1935 (Dec.) 1d. (3), 1940 Red Cross 9p.+9p., 12p.+12p. mint (faults), etc. (100s) **£120-£150**

THE END OF THE SALE

## *Auction Agents*

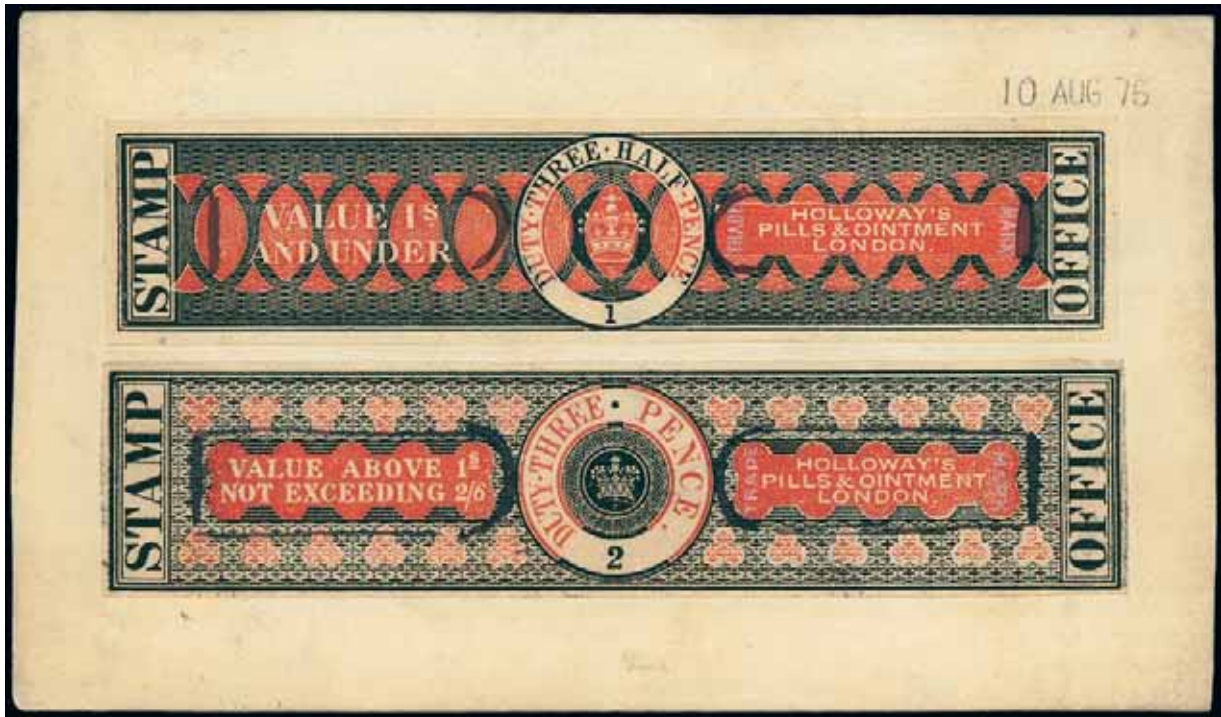
The following independent Auction Agents will be pleased to represent you at our auctions. This list is provided for the convenience of our clients, without recommendation or guarantee, and all enquiries should be directed to the addresses below.

***Trevor Chinery (formerly the Mary Weeks Agency)***

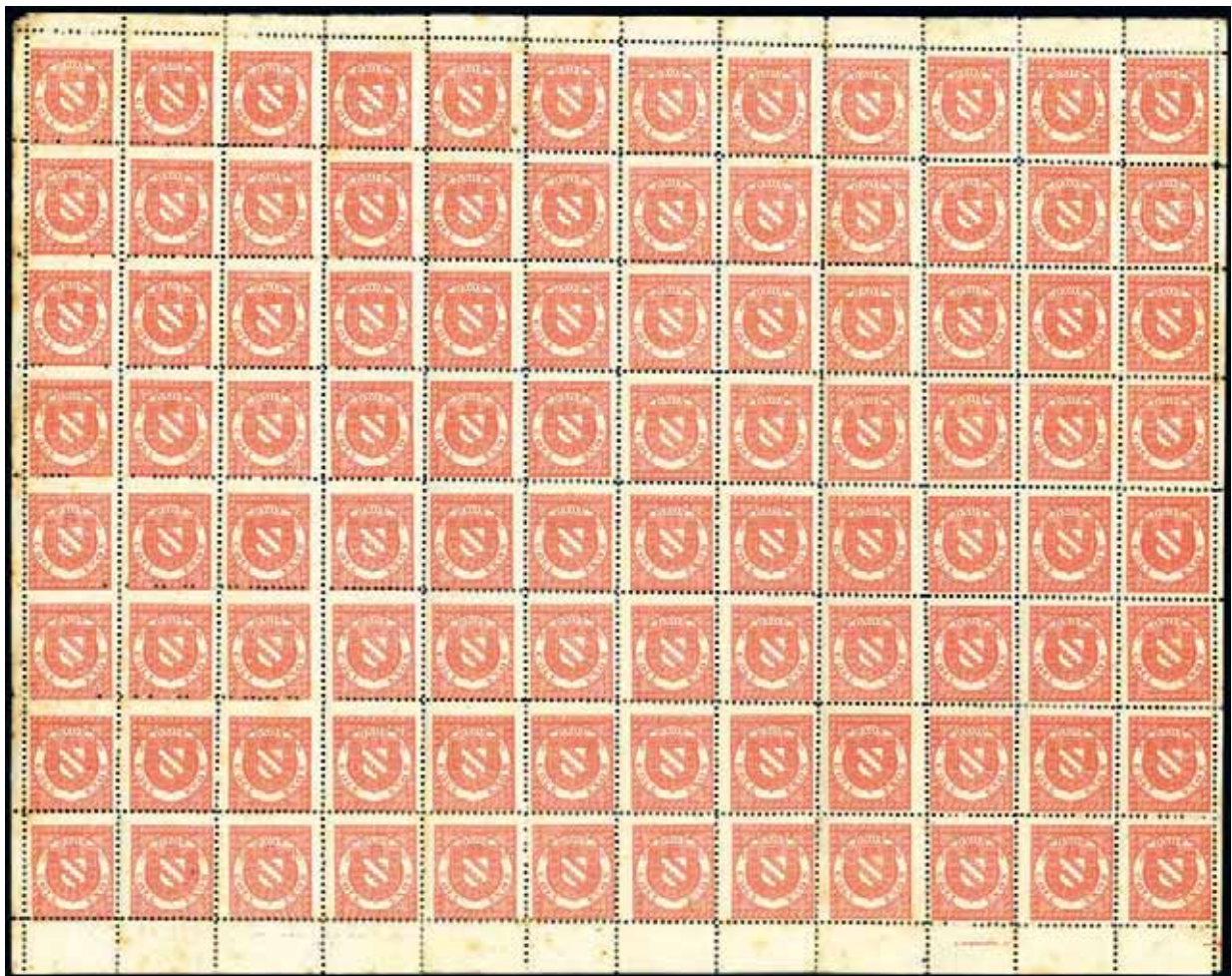
9 St Laurence Way Stanwick Wellingborough Northamptonshire NN9 6QS  
Telephone 01205 330026 Fax 01933 622808  
Email [trevortrilogy@aol.com](mailto:trevortrilogy@aol.com)  
Website: [philatelic-auction-agent.co.uk](http://philatelic-auction-agent.co.uk)

***Nick Martin (Love Auctions)***

Angel House Station Road Sutterton Boston Lincolnshire PE20 2JH  
Telephone 01205 460968  
Email [enquiries@loveauctions.co.uk](mailto:enquiries@loveauctions.co.uk)  
Website: [www.loveauctions.co.uk](http://www.loveauctions.co.uk)



Ex 331



564

# Rev Roger de Lacy-Spencer Collection of Railway Stamps

**T**his exceptional collection, the finest of its kind ever formed, will be offered for sale on **4th June 2015**.

Grosvenor holds regular specialised public auctions of stamps and postal history in central London, the heart of the international philatelic market, achieving consistently high results. Each auction is available to view, with additional illustrations, on our website, [www.grosvenorauctions.com](http://www.grosvenorauctions.com). Complimentary copies of each catalogue are available on request.

Contact **Andrew Williams** today for further information on how Grosvenor can maximise the sale potential of your collection.



## GROSVENOR

399–401 Strand 2nd & 3rd Floors London WC2R 0LT

T: 020 7379 8789 F: 020 7379 9737 E: [info@grosvenor-auctions.co.uk](mailto:info@grosvenor-auctions.co.uk)

[www.grosvenorauctions.com](http://www.grosvenorauctions.com)